



Music Symbols Card Game

by Beatrice Wilder

Print these cards out on the 'business card' or 'credit card' setting of your printer. Choose 'borderless printing' with the LEAST extension amount for the best results.

The first page named, "card backs," should be printed on the backs of all the cards.

The image is a logo for 'Music Fun'. It is enclosed in a red rounded rectangle. The background is white and filled with several orange musical notes of various sizes. At the top, the words 'music fun' are written in a bold, black, sans-serif font, with 'music' on the left and 'fun' on the right, both slightly arched. In the center is a large, red, circular character with a thick black outline. The character has two large, white eyes with black pupils and a wide, black, upward-curving smile. A thick, red, wavy line extends from the bottom of the character's head, curving downwards and then back up towards the right. At the bottom of the logo, the words 'CONCENTRATING ON MUSIC' are written in a smaller, black, sans-serif font, centered horizontally.

music fun

**CONCENTRATING
ON MUSIC**

Music Concentration

(Two or more players)

The cards are shuffled and spread out face down. The first player turns over two cards. If there is a match between a music symbol and its name, then that player keeps the cards and turns over another two. Pairs of cards are turned up until a match is not made in which case they are turned back face down in their original positions and the next player has a turn. The player with the most cards wins.

Go Fish

(Two or more players)

Each player has five cards. The remaining cards are placed face down in a draw pile. The player whose turn it is may ask another player for a specific card to form a matching pair. If the other player has the card asked for, it must be handed over. When a pair is formed the player has another turn. If the person asked does not have the card, they say, "Go fish" and the player has to take the top card from the draw pile. The player first to form pairs of all his or her cards is the winner.

KEY



treble
clef



bass
clef



brace



pause



repeat
sign



bar
lines



double
bar
lines



semibreve



minim



crotchet



quaver



semiquaver



dotted
minim



natural



sharp



flat



2 quavers
joined



2 semiquavers
joined



slur



tie



staff



crotchet
rest



quaver
rest



semiquaver
rest



minim
rest



semibreve
rest

Music Symbols

© Music Fun 2011

treble clef



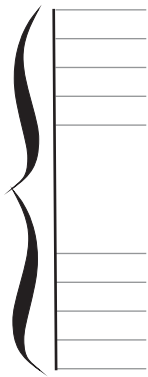
Music Symbols
© Music Fun 2011

bass clef



Music Symbols
© Music Fun 2011

brace



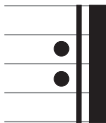
Music Symbols
© Music Fun 2011

pause

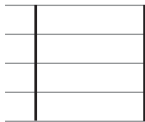


Music Symbols
© Music Fun 2011

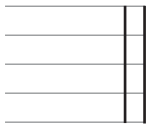
repeat sign



bar lines



double bar lines



semibreve
(whole note)



minim

(half note)



Music Symbols
© Music Fun 2011

crotchet

(quarter note)



Music Symbols
© Music Fun 2011

quaver
(eighth note)



Music Symbols
© Music Fun 2011

semiquaver
(sixteenth note)



Music Symbols
© Music Fun 2011

dotted minim

(dotted half note)



Music Symbols
© Music Fun 2011

natural



sharp



flat



**two quavers
(eighth notes)
joined**



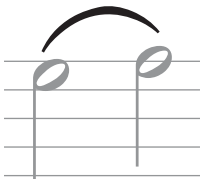
Music Symbols
© Music Fun 2011

**two
semiquavers
(sixteenth notes)
joined**



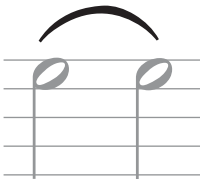
Music Symbols
© Music Fun 2011

slur



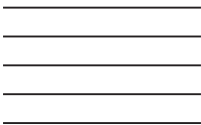
Music Symbols
© Music Fun 2011

tie



Music Symbols
© Music Fun 2011

staff or stave



crotchet
(quarter note)
rest



Music Symbols
© Music Fun 2011

**quaver
(eighth note)
rest**



Music Symbols
© Music Fun 2011

**semiquaver
(sixteenth note)
rest**



Music Symbols
© Music Fun 2011

minim
(half note)
rest



**semibreve
(whole note)
rest**

