



# Melody Match Card Game

by Beatrice Wilder

Print these cards out on the 'business card' or 'credit card' setting of your printer. Choose 'borderless printing' with the LEAST extension amount for the best results.

The first page named, "card backs," should be printed on the backs of all the cards.

The image is a vertical rectangular graphic with rounded corners, enclosed in a thick red border. The background is white and filled with several orange musical notes of varying sizes and orientations. At the top, the words "music fun" are written in a bold, black, sans-serif font, with the letters slightly curved to follow the top edge. In the center is a large, red, circular character with a thick black outline. The character has two large, white eyes with black pupils and a wide, black, upward-curving smile. A long, red, wavy line extends from the bottom of the character's head, curving downwards and then back up towards the right. At the bottom of the graphic, the words "concentrating on music" are written in a smaller, black, sans-serif font, centered horizontally.

music fun

concentrating  
on music

## **Melody Match**

**(Two or more players)**

Each player has five cards. The remaining cards are placed face down in a draw pile. The player whose turn it is may place any cards with a **song title** face up for everyone to see and any cards of bars of music that belong to that title so long as they are placed in the correct order; first two bars and then second two bars. Cards to replace those are taken from the draw pile. The next player may add to the sets with the appropriate bars of music in the correct order or place more cards with song titles. If a player cannot place a card then that player misses a turn. When a set is formed the player who completes the set gathers it up and keeps it. The person with the most sets wins.

## **Melody Match Cards**

© Music Fun 2011

## **Music Concentration**

(Two or more players)

Shuffle the cards and spread them face down. The first player turns over **three** cards. The aim is to form a set of three cards; the beginning two bars, the next two bars and the name of the song. If there is a match between any three cards, then that player keeps the cards and turns over the same number of cards again. If a match is not made they are turned face down in their original positions and the next player has a turn. The player with the most cards wins.

**Melody Match Cards**

© Music Fun 2011

# KEY



All Through the Night



Old MacDonald



Lightly Row



Eency Weency Spider



Polly put the Kettle on



Are you sleeping?



Twinkle, Twinkle Little Star



Ding Dong Bell



Jack and Jill



Goodnight Ladies



Row, Row Row your Boat



Scarborough Fair



This Old Man



Greensleeves



Ode to Joy



Little Brown Jug



Londonderry Air



Yankee Doodle



Billy Boy

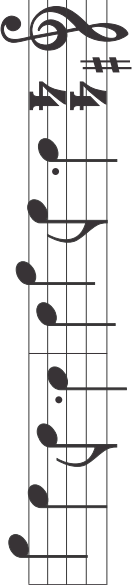


Pop Goes The Weasel



# *Melody Match*

---







# *Melody Match*





## *Melody Match*

*All Through The Night*

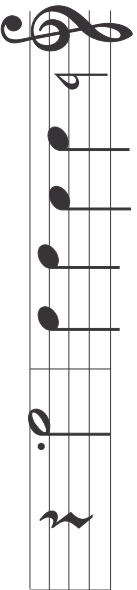


# *Melody Match*

A musical staff in treble clef with a key signature of one flat (Bb) and a 4/4 time signature. The melody consists of the following notes: G4 (quarter), A4 (quarter), Bb4 (quarter), C5 (quarter), Bb4 (quarter), A4 (quarter), G4 (quarter), F4 (quarter), E4 (quarter), D4 (half).



# *Melody Match*



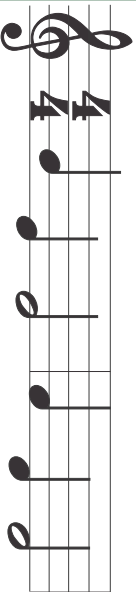


## *Melody Match*

*Old Macdonald*



# *Melody Match*





# *Melody Match*

A musical staff with a treble clef. The notes are: G4 (quarter note), A4 (quarter note), B4 (quarter note), C5 (quarter note), D5 (quarter note), E5 (quarter note), F5 (quarter note), G5 (half note).

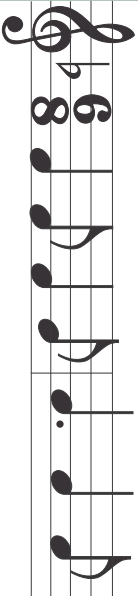


## ***Melody Match***

***Lightly Row***

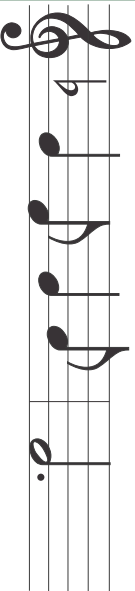


# Melody Match





# *Melody Match*





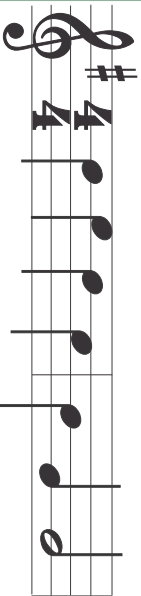
***Melody Match***

---

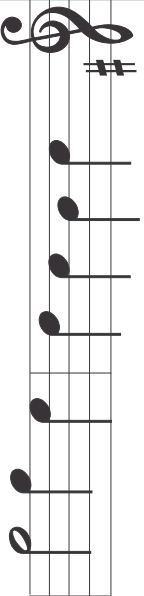
***Ency Weency Spider***



# *Melody Match*



# Melody Match



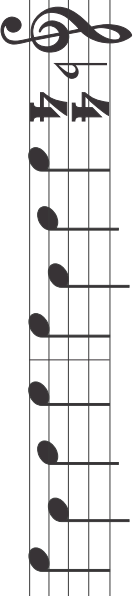


## *Melody Match*

*Polly Put The  
Kettle On*

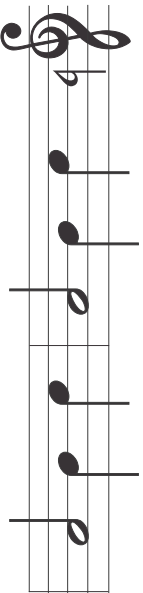


# *Melody Match*





# *Melody Match*







## ***Melody Match***

---

***Are You Sleeping?***

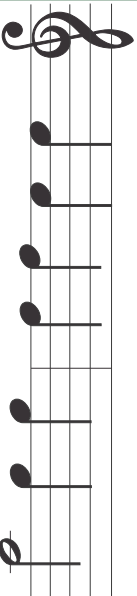


# *Melody Match*

Musical notation on a five-line staff. It starts with a treble clef and a 4/4 time signature. The melody consists of: a quarter note on G4, a quarter note on F4, a quarter note on E4, a quarter note on D4, a quarter note on C4, a quarter note on B3, a quarter note on A3, a quarter note on G3, and a half note on F3.



# *Melody Match*





## *Melody Match*

*Twinkle, Twinkle  
Little Star*

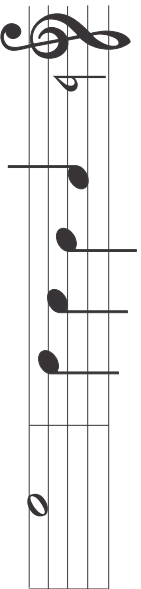


# *Melody Match*

A musical staff with five lines. On the left is a treble clef. To its right is a key signature symbol consisting of a flat sign followed by a B, indicating one flat. The melody is written as follows: a quarter note on the second line (G4), a quarter note on the third line (A4), a quarter note on the fourth line (B4), and a half note on the fifth line (C5). The staff is divided into two measures by a vertical bar line. The first measure contains the first three notes, and the second measure contains the final half note.



# *Melody Match*





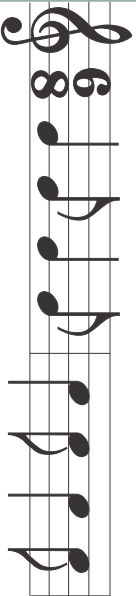
## ***Melody Match***

---

***Ding, Dong, Bell  
Pussy's In The Well***



# *Melody Match*







# Melody Match

A musical staff with a treble clef and a key signature of one flat (Bb). The staff contains a sequence of notes: a quarter note on G4, an eighth note on F4, a quarter note on E4, an eighth note on D4, a quarter note on C4, a dotted quarter note on B3, and a dotted quarter note on A3. A vertical bar line is placed between the C4 and B3 notes.



## ***Melody Match***

***Jack And Jill***



# Melody Match

A musical staff with a treble clef and a 4/4 time signature. The melody consists of four notes: a quarter note on G4, a quarter note on A4, a quarter note on B4, and a dotted quarter note on C5.



# *Melody Match*

A musical staff with a treble clef and a key signature of one flat (B-flat). The staff contains four quarter notes: the first is on the second line (D4), the second is on the second space (E4), the third is on the second line (D4), and the fourth is on the second space (E4) with a dot below it, indicating a dotted quarter note. The staff is divided into two measures by a vertical bar line.



## *Melody Match*

*Good-night, Ladies*

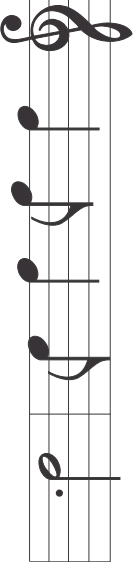


# *Melody Match*

A musical staff with five lines. On the left, there is a treble clef and a 6/8 time signature. The melody is written across four measures. The first measure contains a quarter note on G4. The second measure contains a dotted quarter note on A4. The third measure contains a quarter note on B4. The fourth measure contains a dotted quarter note on C5. A vertical line divides the staff between the second and third measures.



# Melody Match





## ***Melody Match***

***Row, Row, Row  
Your Boat***





# *Melody Match*

A musical staff with five lines. On the left, there is a treble clef. To its right is a time signature of 3/4. The first measure contains a half note on the G line (G4) and a quarter note on the A space (A4). The second measure contains a quarter note on the B space (B4). The third, fourth, and fifth measures are empty.



# *Melody Match*

A musical staff with five lines. On the left, there is a treble clef. To its right is a flat sign (Bb). The melody is written as follows: a quarter note on the second line (D4), a quarter note on the second space (E4), a quarter note on the second space (E4), and a dotted quarter note on the second space (E4). A vertical bar line is placed between the second and third notes. The staff is divided into two measures by this bar line. The first measure contains the first three notes, and the second measure contains the final dotted quarter note.



***Melody Match***

***Scarborough Fair***



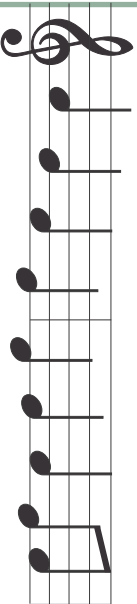
# *Melody Match*

A musical staff with five horizontal lines. On the left, there is a treble clef. In the center, the time signature is 4/4. The melody consists of seven notes: a quarter note on the second line (F4), a quarter note on the second space (G4), a half note on the second space (G4), a quarter note on the second space (G4), a quarter note on the second space (G4), a quarter note on the second space (G4), and a half note on the second space (G4).

4/4



# *Melody Match*





## ***Melody Match***

***This Old Man***



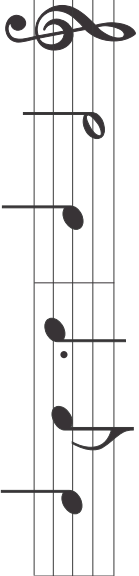
# *Melody Match*

3/4

G A A A A



# *Melody Match*







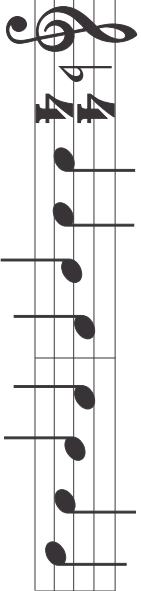
## *Melody Match*

---

# *Green Sleeves*

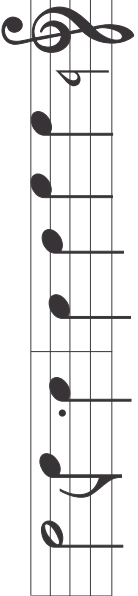


# *Melody Match*





# *Melody Match*



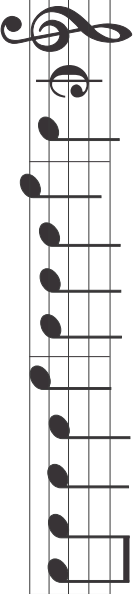


## ***Melody Match***

***Ode To Joy***

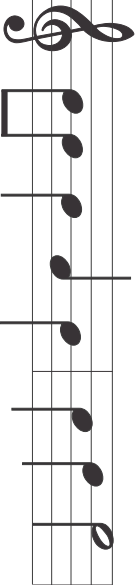


# *Melody Match*





# *Melody Match*



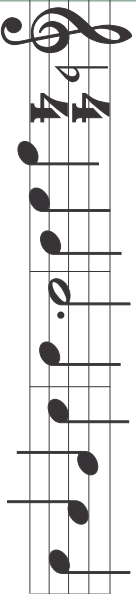


## ***Melody Match***

***Little Brown Jug***



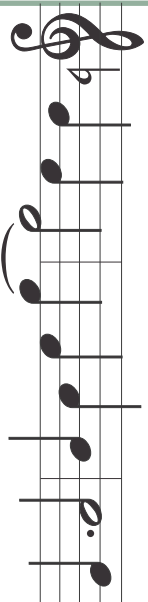
# *Melody Match*







# *Melody Match*





## ***Melody Match***

***Londonderry Air***



# *Melody Match*

A musical staff in treble clef with a 4/4 time signature. The staff contains a sequence of seven notes: a quarter note on G4, a quarter note on A4, a quarter note on B4, a quarter note on C5, a quarter note on B4, a quarter note on A4, and a half note on G4.



# *Melody Match*

A musical staff with a treble clef. The staff contains seven notes: four quarter notes and three half notes. The notes are positioned on the following lines and spaces from left to right: the first line (F4), the second space (G4), the second line (F4), the first space (E4), the first line (D4), the first space (E4), and the first line (D4).

F4 G4 F4 E4 D4 E4 D4

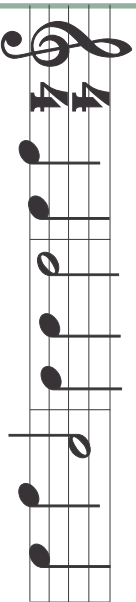


## *Melody Match*

*Yankee Doodle*

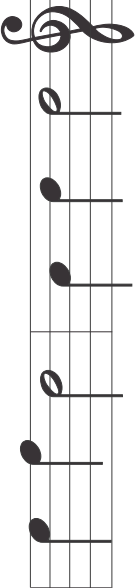


# *Melody Match*





# Melody Match





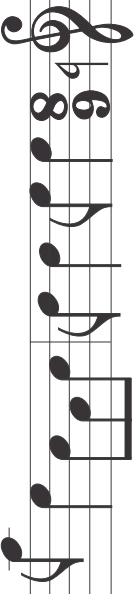
## ***Melody Match***

***Billy Boy***



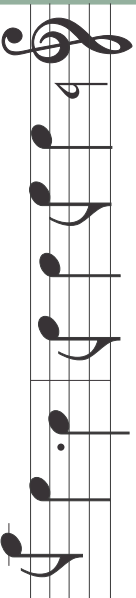


# *Melody Match*





# *Melody Match*





## ***Melody Match***

---

***Pop Goes The Weasel***