



Key Signatures and Scales

by Beatrice Wilder

Contents

Worksheet 1	C major scale
Worksheet 2	G major scale
Worksheet 3	D major scale
Worksheet 4	A major scale
Worksheet 5	E major scale
Worksheet 6	B major scale
Worksheet 7	F sharp major scale
Worksheet 8	F major scale
Worksheet 9	B flat major scale
Worksheet 10	E flat major scale
Worksheet 11	A flat major scale
Worksheet 12	A harmonic minor scale
Worksheet 13	E harmonic minor scale
Worksheet 14	D harmonic minor scale
Worksheet 15	Test Your Knowledge 1 - Quiz
Worksheet 16	Test Your Knowledge 2 - Quiz

Copyright © Beatrice Wilder 1999
First published in 1999 by **Music Fun**
Revised in 2009 by Music Fun

P.O. Box 342 Katoomba NSW 2780
19 Millyard Lane Katoomba 2780

Phone: (02) 4782 3073

Email: info@musicfun.com.au
Web: www.musicfun.com.au



Key Signatures and Scales

Worksheet 1

Name

C major scale



C D E F G A B C D E F G A B C

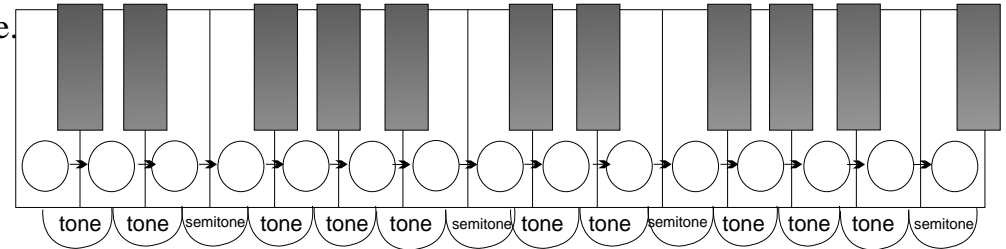
Using semibreves, complete the above scale placing each note over its letter name.

Mark all the semitones with slurs

How many sharps are in the key signature?

How many octaves of C major scale have you written?

Using minims (be careful with the stems) write the same scale in the bass.



Write the correct letter names onto the keyboard.



C D E F G A B C D E F G A B C

Complete this C major scale and draw the correct clef at the beginning.



How many octaves did you write?

What sort of notes did you use?



Key Signatures and Scales

Worksheet 2

Name

G major scale

Name the 5th letter up from C

G A B C D E F G

Complete these scales using minims.

G A B C D E F G

How many octaves of each scale did you write?

Mark the SEMITONES on the first scale and the TONES on the second scale.

The first scale has a key signature. The second scale needs sharp next to a note. Can you name the raised note?

Complete this G major scale in the bass.

G A B C D E F G

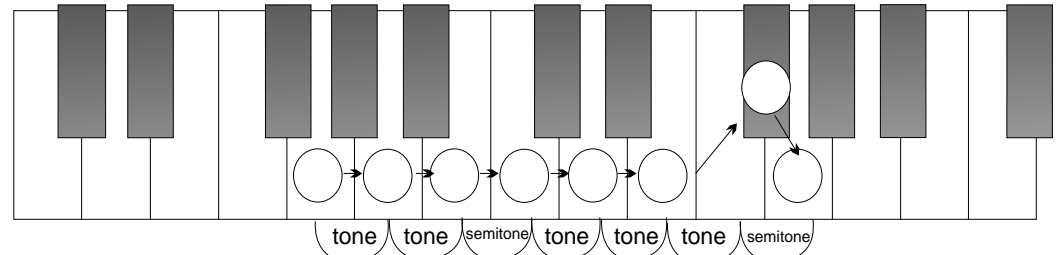
Can you complete this?

T_ _ T_ _ S_ _ _ _ T_ _ T_ _ T_ _ S_ _ _ _

Complete this G major scale and draw the correct clef at the beginning.

Add the correct key signature.

G A B C D E F G



Write the correct letter names onto the keyboard.

Remember the pattern of tones and semitones.

Copy the G major key signatures in the treble and in the bass



Key Signatures and Scales

Worksheet 3

Name

D major scale

Name the 5th letter up from C

Name the 5th letter up from G

Complete these scales using crotchets.

D E F G A B C D

D E F G A B C D

Which sharp was used in G major scale?

Which new sharp was added?

The first scale has a key signature. Can you name the sharps in the correct order?

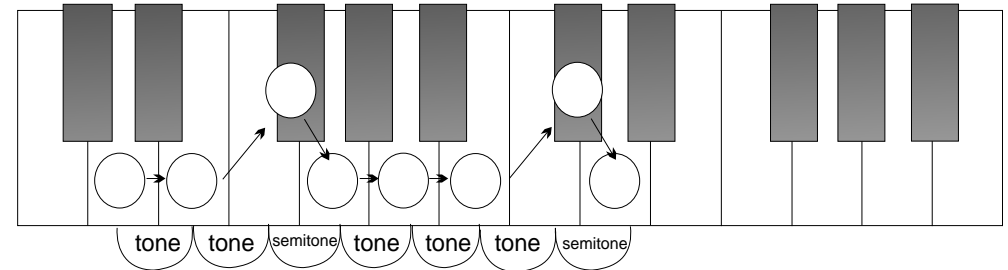
Complete this D major scale in the bass. Use quavers.

D E F G A B C D

Complete this D major scale and draw the correct clef at the beginning. Add the correct accidentals.

Between which notes do the SEMITONES occur?

D E F G A B C D



Write the correct letter names onto the keyboard.

Remember the pattern of tones and semitones.

Write the D major key signatures in the treble and in the bass



Key Signatures and Scales

Worksheet 4

Name

A major scale

Name the 5th letter up from C and the 5th letter up from G and the 5th letter up from D Complete these scales.

A B C D E F G A

A B C D E F G A

Name the sharp in G major scale Name the sharps in D major scale in order Name the sharp added for A major.....

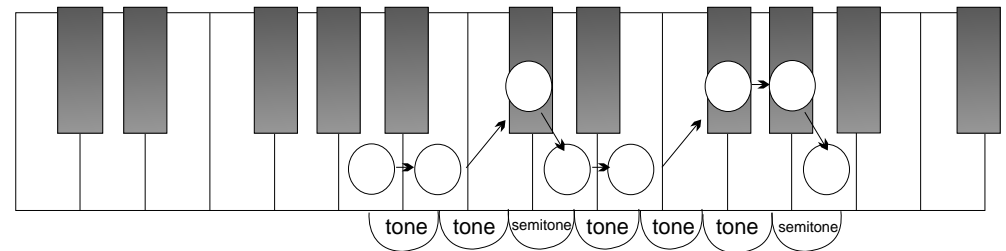
Write the pattern of tones and semitones in a major scale

Complete this A major scale in the bass.

A B C D E F G A

Complete this A major scale and draw the correct clef at the beginning. Add the correct key signature.

A B C D E F G A



Write the correct letter names onto the keyboard.

Remember the pattern of tones and semitones.

Write the A major key signatures in the treble and in the bass



Key Signatures and Scales

Worksheet 5

Name

E major scale

Complete these scales using crotchets.

E F G A B C D E

E F G A B C D E

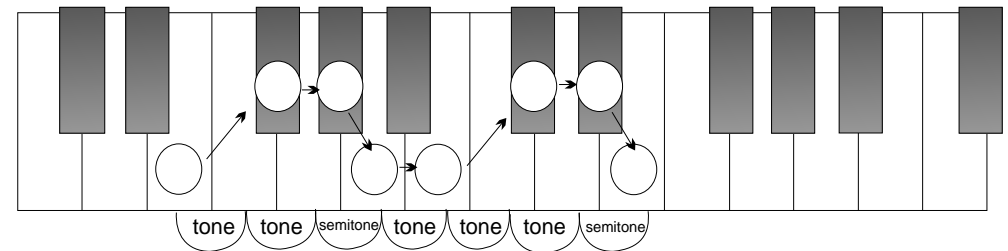
Mark the following True or False:

Between F sharp and G sharp is a semitone E major scale has four sharps D sharp to E is a tone

How many semitones occur in one octave of a major scale?

Complete this E major scale in the bass. Mark the tones.

E F G A B C D E



Write the correct letter names onto the keyboard.

Remember the pattern of tones and semitones.

Write the E major key signatures in the treble and in the bass

E F G A B C D E



Key Signatures and Scales

Worksheet 6

Name

B major scale

Complete these scales using crotchets.

B C D E F G A B

B C D E F G A B

This scale has five sharps. Name them

Name the note that comes after the first semitone

The note after B is The note before E is The interval between C sharp and D sharp is a

Complete this B major scale in the bass.

B C D E F G A B

tone tone semitone tone tone tone semitone

Write the correct letter names onto the keyboard.

Remember the pattern of tones and semitones.

Write the B major key signatures in the treble and in the bass

Complete this B major scale and draw the correct clef at the beginning. Add the correct accidentals

B C D E F G A B



Key Signatures and Scales

Worksheet 7

Name

F sharp major scale

Complete these scales using semibreves.

F G A B C D E F

F G A B C D E F

Name the 5th note down from D How many sharps in one octave of F sharp major scale

The interval between B and C sharp is a The enharmonic equivalent of this scale is: G flat major / A flat major

Complete this F sharp major scale in the bass. Mark semitones with slurs.

F G A B C D E F

tone tone semitone tone tone tone semitone

Write the correct letter names onto the keyboard.

Remember the pattern of tones and semitones.

Write F sharp major key signatures in the treble and in the bass

F G A B C D E F



Key Signatures and Scales

Worksheet 8

Name

F major scale

Complete these scales using semibreves.

F G A B C D E F

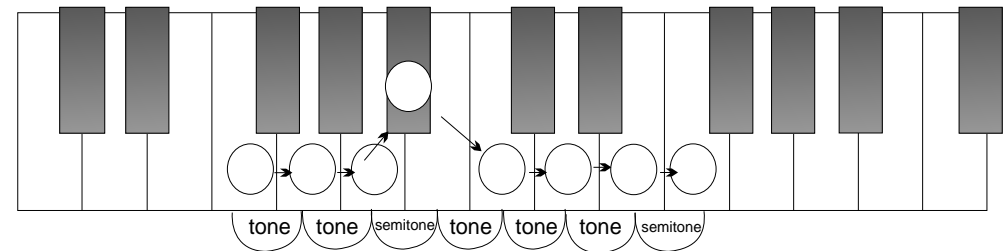
F G A B C D E F

Name the 5th note down from C How many sharps does G major scale need? How many flats does F major scale need?

Which note in this scale needs to be lowered by one semitone? Name the interval between E and F?

Complete this F major scale in the bass. Mark the semitones with slurs.

F G A B C D E F



Write the correct letter names onto the keyboard.

Remember the pattern of tones and semitones.

Write the F major key signatures in the treble and in the bass

Complete this F major scale and draw the correct clef at the beginning. Add the correct accidental.

F G A B C D E F



Key Signatures and Scales

Worksheet 9

Name

B flat major scale

Complete these scales using crotchets.

B C D E F G A B

B C D E F G A B

This scale begins on a black key? Name it

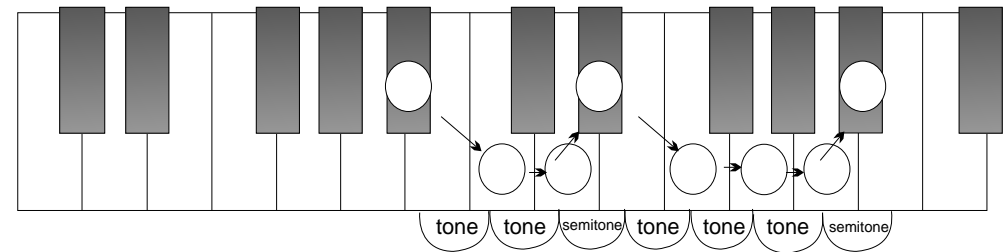
Name the interval between B flat and C

Intervals:

Between C and D is Between F and G is Between E flat and F is Between C and D is

Complete this B flat major scale in the bass.

B C D E F G A B



Write the correct letter names onto the keyboard.

Remember the pattern of tones and semitones.

Write the B flat major key signatures in the treble and in the bass

Complete this B flat major scale and draw the correct clef at the beginning. Add the correct accidentals

B C D E F G A B



Key Signatures and Scales

Worksheet 10

Name

E flat major scale

Complete these scales using crotchets.

E F G A B C D E

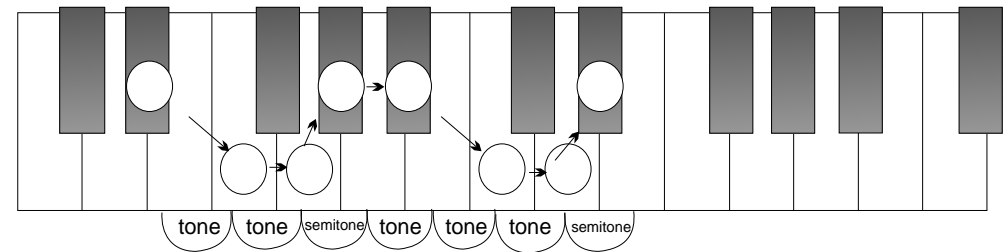
E F G A B C D E

Name the flats in the key signature in the correct order Name the first 3 intervals in a major scale

Name the last 3 intervals in a major scale Name the interval that is in the middle

Complete this E flat major scale in the bass. Use minims.

E F G A B C D E



Write the correct letter names onto the keyboard.

Remember the pattern of tones and semitones.

Write the E flat major key signatures in the treble and in the bass

Complete this E flat major scale and draw the correct clef at the beginning. Add the key signature

E F G A B C D E



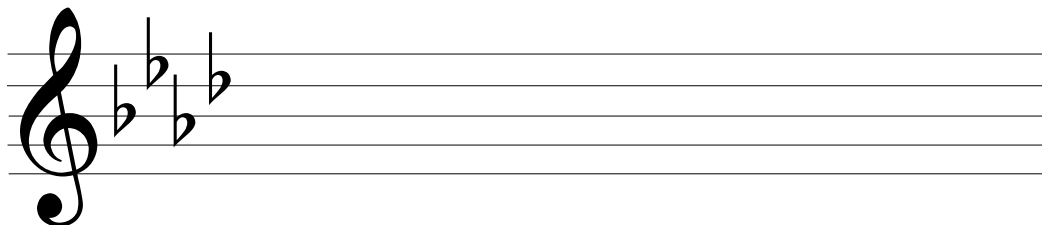
Key Signatures and Scales

Worksheet 11

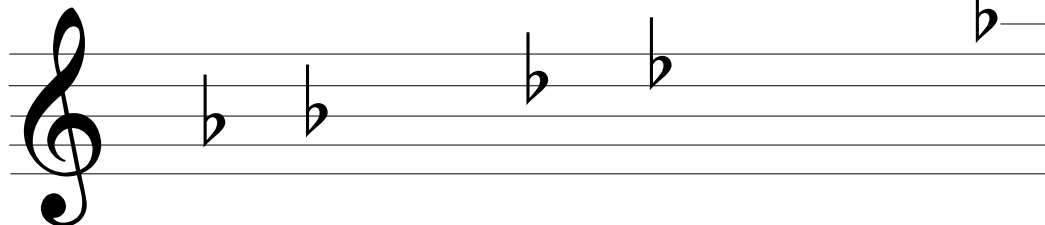
Name

A flat major scale

The note one semitone up from C is and one tone lower than G is the 5th note in the scale is Complete these scales.



A B C D E F G A

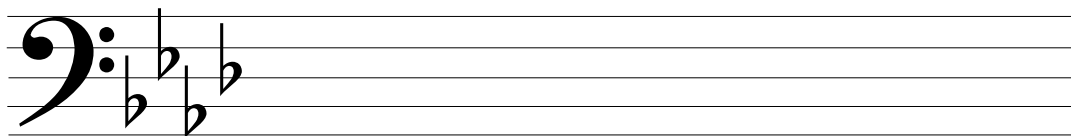


A B C D E F G A

Name the flats in A flat major scale Name the tonic of this scale Name the leading note

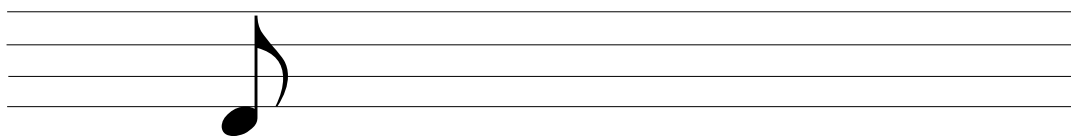
Major scales have a pattern of two tones and a semitone at both ends, they are joined in the middle by a:

Complete this A flat major scale in the bass.

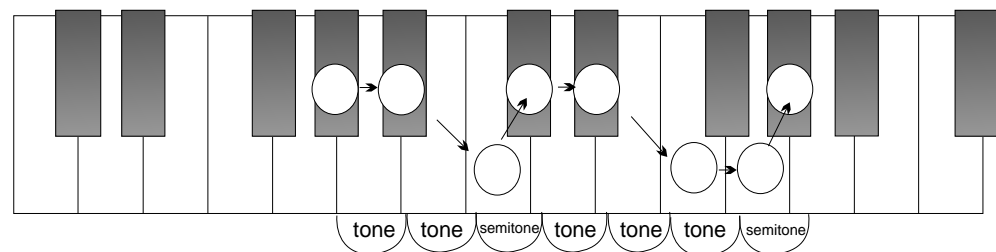


A B C D E F G A

Complete this A flat major scale and draw the correct clef at the beginning. Add the correct key signature.



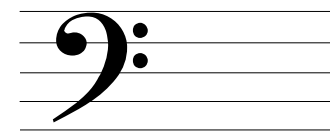
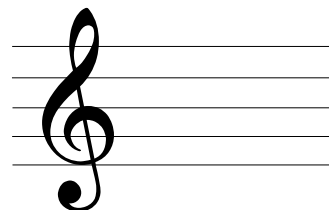
A B C D E F G A



Write the correct letter names onto the keyboard.

Remember: the relative minor key of A flat major is F minor.

Write the A flat major key signatures in the treble and in the bass





Key Signatures and Scales

Worksheet 12

Name

A harmonic minor scale

Harmonic minor scales have a RAISED 7th note that is never a part of the key signature. It is always written as an accidental.

A B C D E F G A B C D E F G A

Using minims, complete the scale above.

Mark all the semitones with slurs

Mark all the tones with square brackets

Are there any intervals larger than a tone?

Which note needs an accidental?

How many sharps or flats in the key signature?

Using semibreves, write the same scale in the bass. Don't forget the last accidental!

Write the correct letter names onto the keyboard.

A B C D E F G A B C D E F G A

Complete this A minor scale and draw the correct clef at the beginning.

Put in the RAISED 7th in the correct place.

Where does the accidental go?

What sort of accidental did you use?

A B C D E F G A



Key Signatures and Scales

Worksheet 13

Name

E harmonic minor scale

E F G A B C D E

Using minims, complete the scale above.

Write the pattern of tones and semitones in harmonic minor scales:

.....

Where is the interval larger than a tone?

Which accidental is not in the key signature?

Name the interval between G and A

Using minims, write the same scale in the bass. Put in the key signature and accidental.

E F G A B C D E

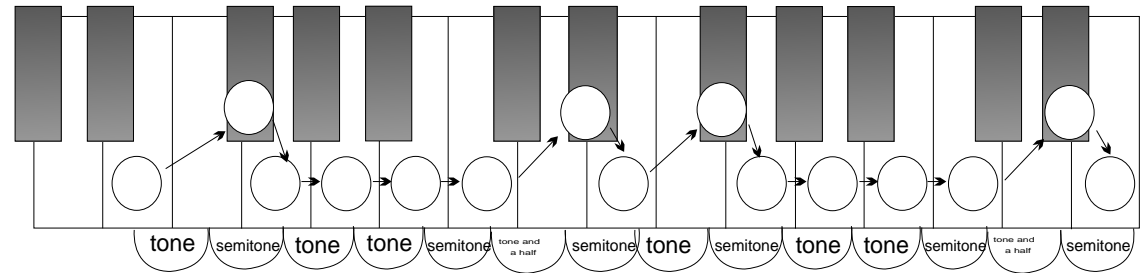
Complete this E minor scale and draw the correct clef at the beginning.

Use a key signature. Don't forget the raised 7th.

Where does the accidental go?

Which two notes in this scale are raised?

Copy the Key Signature



Write the correct letter names onto the keyboard.

Copy the Key Signature

E F G A B C D E



Key Signatures and Scales

Worksheet 14

Name

D harmonic minor scale

D E F G A B C D

Copy the Key Signature

Using semibreves, complete the scale above.

Mark all the semitones with slurs

Name the interval between B flat and C sharp

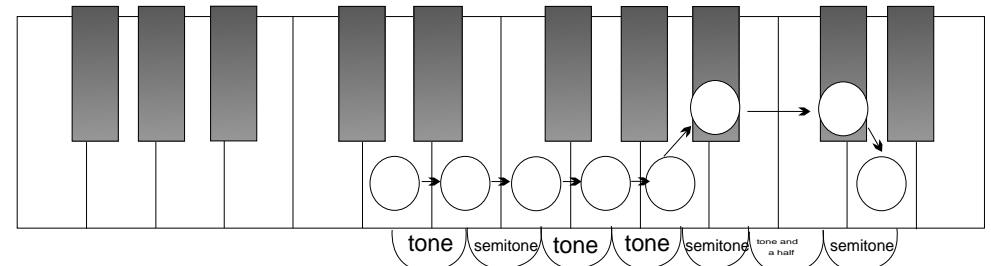
Where is the interval larger than a tone?

Which note is raised a semitone?

Which note is lowered a semitone?

Using crotchets, write the same scale in the bass. Put in the key signature and accidental.

D E F G A B C D



Write the correct letter names onto the keyboard.

Copy the Key Signature

Complete this D minor scale and draw the correct clef at the beginning.

Use a key signature..

Where does the accidental go?

Which note is raised?

D E F G A B C D



Key Signatures and Scales

Worksheet 15

Name

B harmonic minor scale

Complete these scales using crotchets.

B C D E F G A B

B C D E F G A B

The key signature has two sharps. Name them

Name the sharp note that is not in the key signature

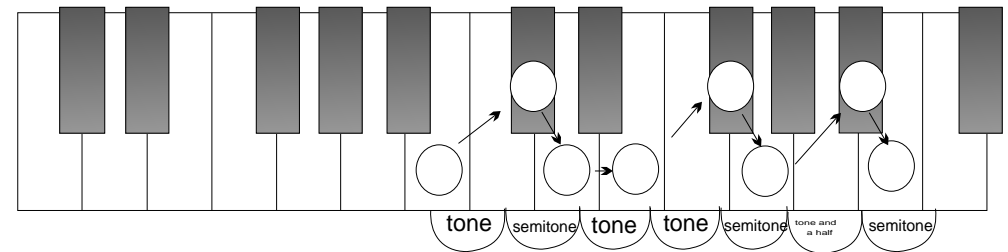
The semitones are between and The interval between D and E is a

Complete this B minor scale in the bass.

B C D E F G A B

Complete this B minor scale and draw the correct clef at the beginning. Add the correct accidentals

B A G F E D C B



Write the correct letter names onto the keyboard.

Remember the pattern of tones and semitones.

Write the B minor key signatures in the treble and in the bass



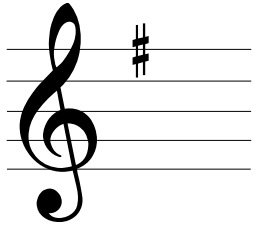
Key Signatures and Scales

Worksheet 16

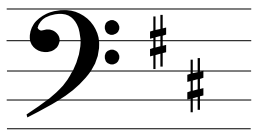
Name

Test your Knowledge 1

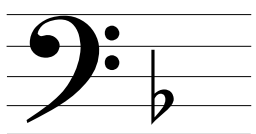
Tick the Correct Answers



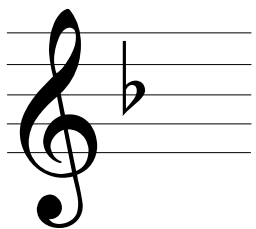
- C major
- D major
- A minor
- G major



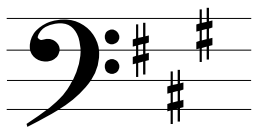
- F major
- D major
- E minor
- G major



- A major
- D major
- D minor
- E flat major

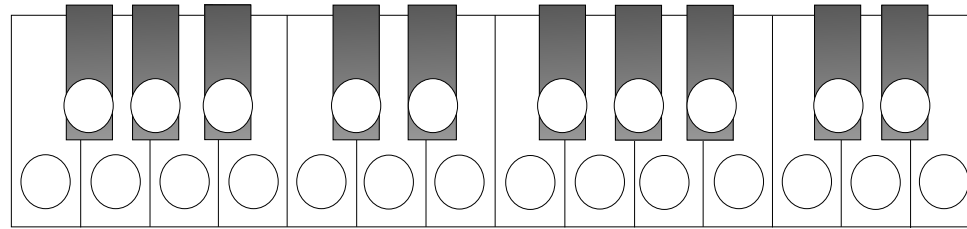


- B flat major
- D major
- A minor
- F major

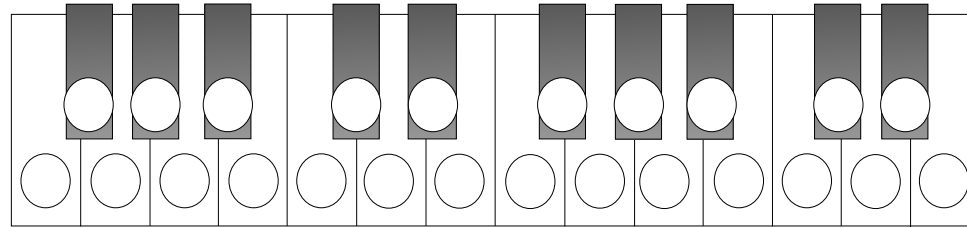


- E major
- A major
- A minor
- E minor

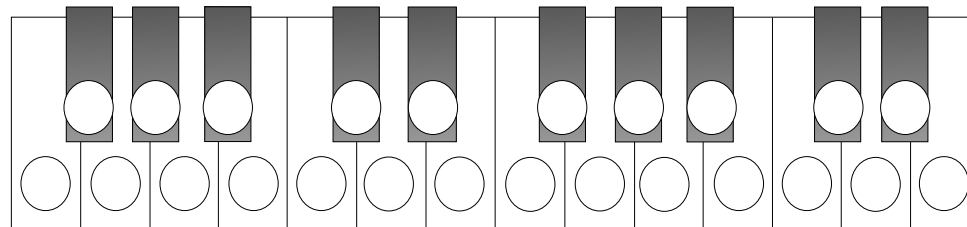
Colour the circles to create the scales of:



F MAJOR

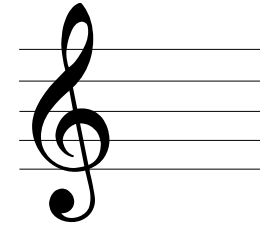


E MAJOR



B FLAT MAJOR

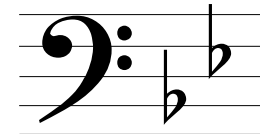
Tick the Correct Answers



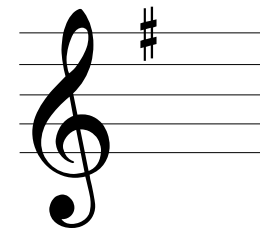
- C major
- D major
- E minor
- G major



- E major
- E flat major
- E minor
- G major



- A major
- B flat major
- D minor
- E flat major



- F major
- D minor
- E minor
- F minor



- E major
- D major
- A minor
- E minor



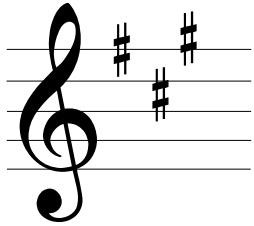
Key Signatures and Scales

Worksheet 17

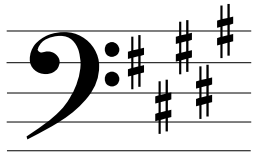
Name

Test your Knowledge 2

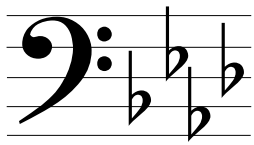
Tick the Correct Answers



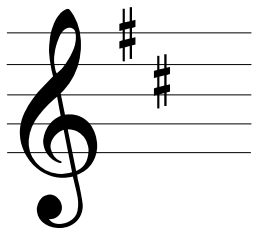
- F major
- D major
- A minor
- A major



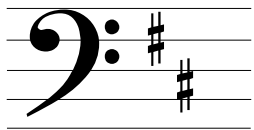
- A major
- B major
- B minor
- E major



- A flat major
- D flat major
- D minor
- E flat major

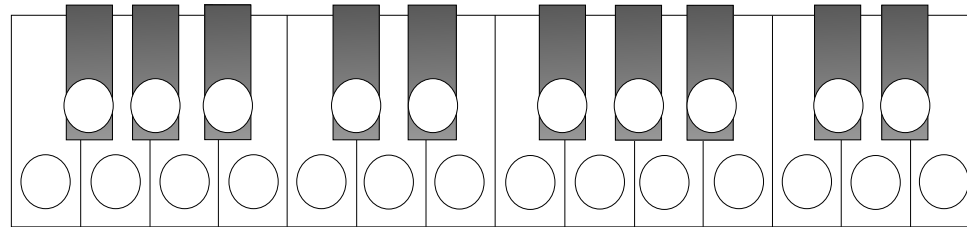


- F major
- D major
- G minor
- A major

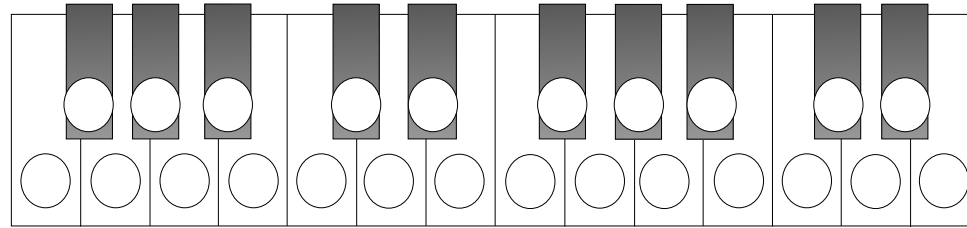


- E minor
- A major
- B minor
- F minor

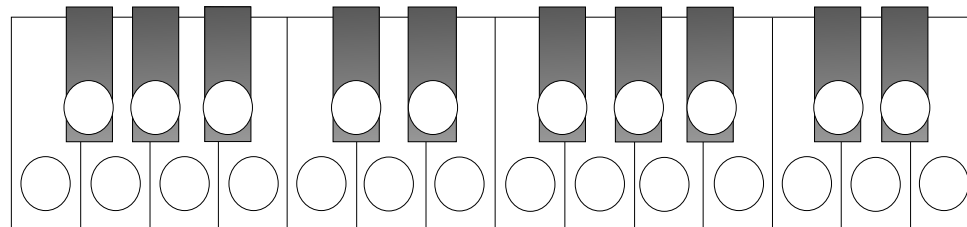
Colour the circles to create the scales of:



F SHARP MAJOR

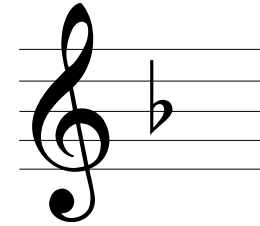


B MAJOR



E FLAT MAJOR

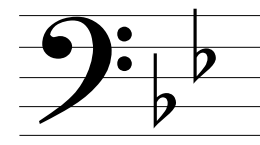
Tick the Correct Answers



- G major
- F major
- F minor
- D major



- A flat major
- E flat major
- E minor
- F minor



- G minor
- A major
- D minor
- B major



- B major
- A minor
- E minor
- E major



- F major
- G major
- A minor
- D minor