



Product of Australia

Let's Draw Symbols

by Beatrice Wilder

Contents

Sheet 1	Basic Information about Symbols
Sheet 2	Treble Clefs
Sheet 3	Bass Clefs
Sheet 4	Trace Six
Sheet 5	Connections
Sheet 6	Wordsearch
Sheet 7	Five Rests
Sheet 8	Sharps, Flats, Naturals
Sheet 9	Quiz
Sheet 10	Crossword
Sheet 11	Drawing Big Symbols
Sheet 12	Drawing Small Symbols
Sheet 13	A Little Revision

Copyright © Beatrice Wilder 2002

Published in 2002 by **Music Fun**

Reprinted in 2007

P.O. Box 342 Katoomba NSW 2780

19 Millyard Lane Katoomba 2780

Australia

Phone: (02) 4782 3073

Fax: (02) 4782 6362

Email: info@musicfun.com.au

Web: www.musicfun.com.au



Let's Draw Symbols

Sheet 1

Basic Information about Symbols



treble clef

also called a G clef. It shows that the 2nd line of the staff, the line it curls around, is the first G above middle C.



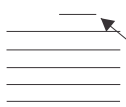
bass clef

also called an F clef. It shows that the 4th line of the staff, the line it curls around, is the first F below middle C.



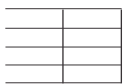
brace

This is really a brace and bracket. The brace is the upright line and the bracket curls around it. It shows that the notes on both staves are to be played together.



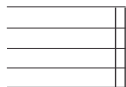
staff or stave

The five lines on which we write music. **Ledger lines** are used when we need to write notes any higher or lower.



bar lines

The upright lines dividing sections (measures or bars) of music.



double bar lines

two upright lines to mark divisions within or the end of a section or a piece of music.



repeat sign

these dots tell us to repeat a section of



whole note or semibreve

The whole note is the longest note in general use. The **whole note** rest is in the shape of a box hanging below the fourth line of the staff.



half note or minim

A half note is played for half the time of a semibreve. The **half note** rest is in the shape of a box sitting on the third line of the staff.



dotted half note or minim

A dot placed after any note makes it longer by half of its own value.



quarter note or crotchet

A quarter note is played for half of the time of a half note. The distinctive quarter note rest is to its right.



eighth note or quaver

An eighth note is played for half of the time of a quarter note. Its rest is to its right. Two or more eighth notes are joined by a beam.



sixteenth note or semiquaver

A sixteenth note is played for half the time of an eighth note. Its rest is to its right. Two or more sixteen notes are joined by two beams.



sharp

A sharp sign placed in front of a note tells us that the note must be played one semitone higher.



flat

A flat sign placed in front of a note tells us that the note must be played one semitone lower.



natural

A natural sign placed in front of a note tells us that a note previously altered must now be played at its original pitch.



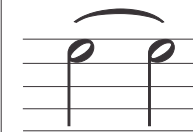
pause

A pause sign over a note tells us that the note should be held for longer than its usual value.



slur, or phrase line

A slur or phrase line can be drawn over two or more notes. These notes are to be played smoothly, connected together. They are usually notes of different pitch.



tie

Notes which are connected by a tie are always of the same pitch. These notes are 'tied' together and are played as one note, held for their combined values.



Treble Clefs

Trace the Treble Clefs starting at the arrow point. You may trace each one in a different colour.

start

Complete these Treble Clefs. Make sure that they reach from the top line to the bottom line..

top

top

bottom

bottom

Can you draw a treble clef by yourself?



Bass Clefs

Trace the Bass Clefs starting at the arrow point. You may trace each one in a different colour.

Complete these bass clefs.

Can you draw two bass clefs without help?

Do you remember how to draw a treble clef?



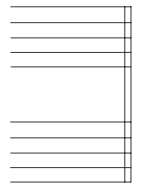
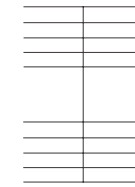
Let's Draw Symbols

Sheet 4

Trace Six

Here are six symbols for you to trace. They are:

Name



Bar lines

Double Bar lines



Treble clef



Bass clef



Time signature

Can you arrange them on this Grand Stave in the proper places?

Name the symbols used: 1

2 3 4 5 6



Connections

Find the words for each of the music symbols and join each word to its symbol with a straight line.

treble clef
 bass clef
 brace
 repeat sign
 bar lines
 double bar lines
 whole note
 pause
 half note
 or quarter note
 eighth note
 sixteenth note
 dotted half note

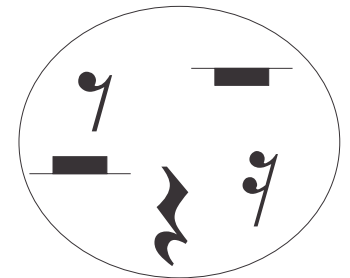
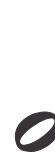
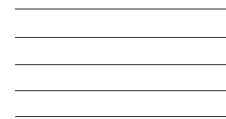
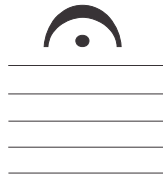
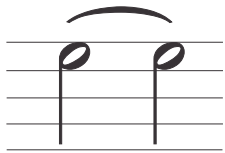
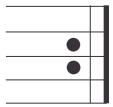
natural
 sharp
 flat
 2 eighth notes joined
 2 sixteenth notes joined
 slur, or phrase line
 tie
 staff
 quarter note rest
 eighth note rest
 sixteenth note rest
 half note rest
 whole note rest



Wordsearch

Find words reading across or down for each of the music symbols and write the correct label for each one.



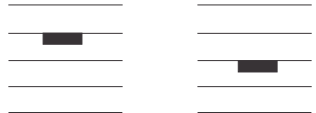


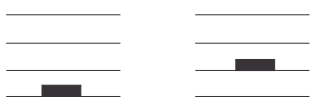


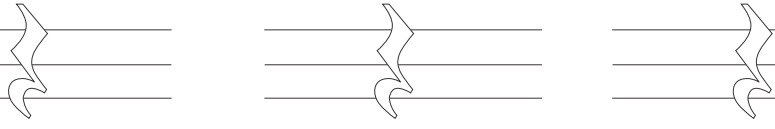






e	t	o	n	h	t	n	e	e	t	x	i	s
e	t	o	n	r	e	t	r	a	u	q	w	l
t	r	e	b	l	e	c	l	e	f	w	h	u
e	t	o	n	h	t	h	g	i	e	n	o	r
n	g	i	s	t	a	e	p	e	r	a	l	v
p	p	x	e	h	a	l	f	n	o	t	e	y
t	a	l	f	f	n	l	f	q	f	u	n	m
h	u	h	s	x	p	r	a	h	s	r	o	c
u	s	u	c	r	e	s	t	s	t	a	t	r
u	e	c	a	r	b	a	s	s	c	l	e	f





Five Rests

Every note has its own rest. The rest has the same value as the note that it belongs to.
Can you recognize and draw each rest?

<p>whole note  semibreve</p>	<p>whole note rest </p>	<p>How well can you draw whole note rests? _____ _____ _____</p>	<p>Which one is correct? </p>
<p>half note  minim</p>	<p>half note rest </p>	<p>How well can you draw half note rests? _____ _____ _____</p>	<p>Which one is correct? </p>
<p>quarter note  crotchet</p>	<p>quarter note rest </p>	<p>Trace and color these quarter note rests. </p>	<p>Draw a quarter note rest _____ _____ _____</p>
<p>eighth note  quaver</p>	<p>eighth note rest </p>	<p>Trace and color these eighth note rests. </p>	<p>Draw an eighth note rest _____ _____ _____</p>
<p>sixteenth note  semiquaver</p>	<p>sixteenth note rest </p>	<p>Trace and color these sixteenth note rests. </p>	<p>Draw a sixteenth note rest _____ _____ _____</p>



Sharps, Flats, Naturals

Trace the sharps, flats and naturals.

Sharps in spaces	Sharps on lines	The sharp must be placed on the same line or in the same space as the note that it belongs to.	Draw sharps next to both of these notes.
		The flat must be placed on the same line or in the same space as the note that it belongs to. The same rule applies to naturals (below).	Draw flats next to both of these notes. Draw naturals next to both of these notes.



QUIZ

(Tick the correct answer)

Treble clef
 Whole note
 Pause

Bass clef
 Treble clef
 Natural

Whole note
 Quarter note
 Half note

Bass clef
 Brace
 Slur

Bass clef
 Treble clef
 Eighth note

Eighth note
 Natural
 Flat

Tie
 Whole note
 Slur

Half note rest
 Half note
 Whole note

Whole note rest
 Quarter note
 Half note rest

Eighth note
 Half note rest
 Repeat sign

Flat
 Natural
 Quarter note

Natural
 Sharp
 Repeat sign

Tie
 Staff
 Bar lines

Half note
 Natural
 Quarter note

Whole note rest
 Half note rest
 Flat

Tie
 Brace
 Slur

Quaver
 Crotchet
 Semiquaver

Minim rest
 Crotchet rest
 Quaver rest

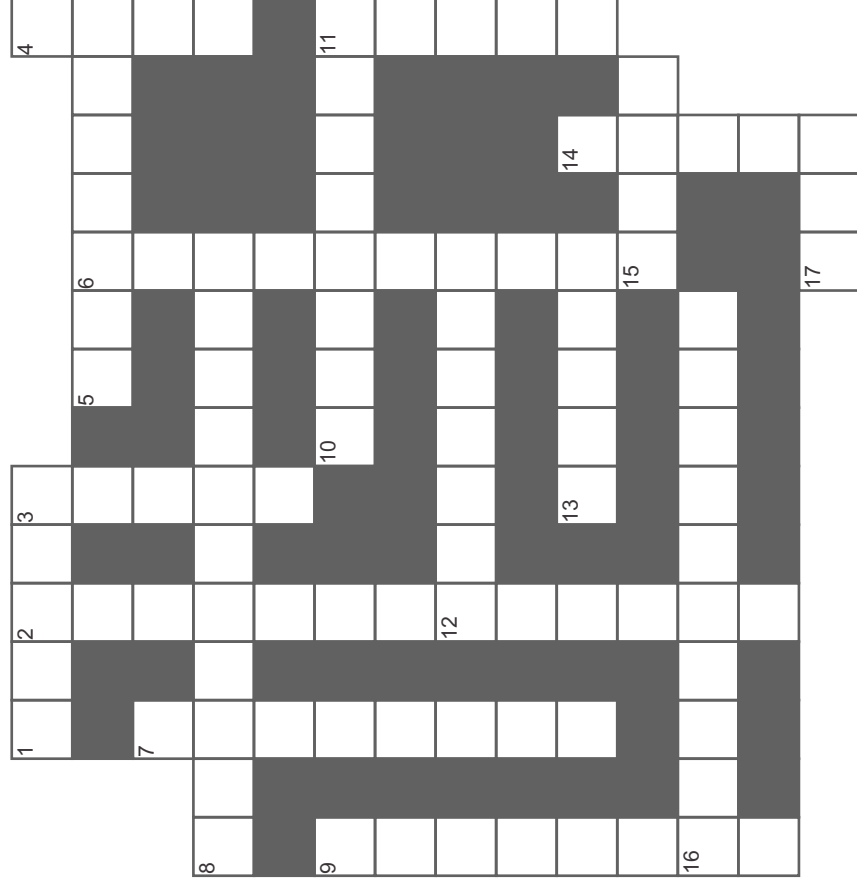


Let's Draw Symbols

Sheet 10

Name

CROSSWORD



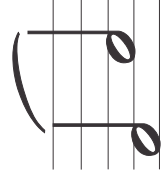
DOWN



2.



3.



4.



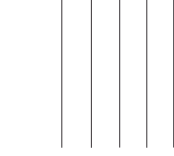
6.



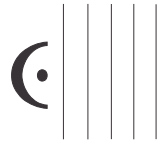
7.



9.

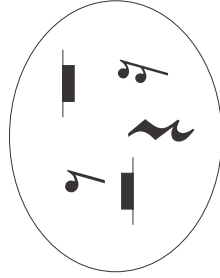


11.



14.

ACROSS



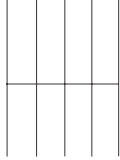
1.



8.



5.



10.



12. **3**
13. **4**

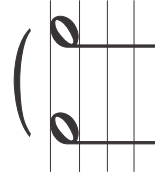
How many beats
in each bar for this
time signature?



15.



16.



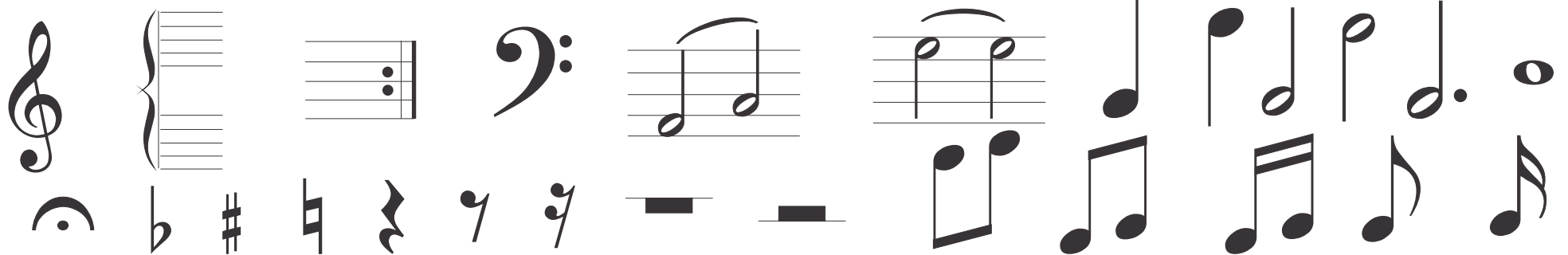
17.



Drawing BIG Symbols

How many of the symbols below can you draw accurately on the staves above?
10 = good 15 = very good 20 = excellent 26 = brilliant

Handwriting practice area consisting of ten sets of five horizontal lines for drawing musical symbols.





Drawing SMALL Symbols

Can you draw the symbols into their boxes? Cross them out as you use them.

What is the name of the symbol that is left over. Write it here

Dotted half note

Natural

Treble clef

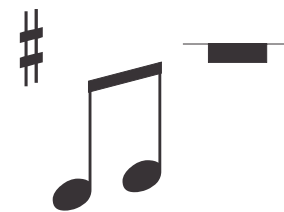
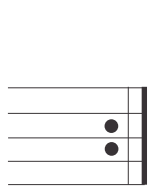
Bass clef

Quarter note rest

Whole note

Sharp

Quarter note



Pause

Flat

Half note

Whole note rest

Eighth note

Half note rest

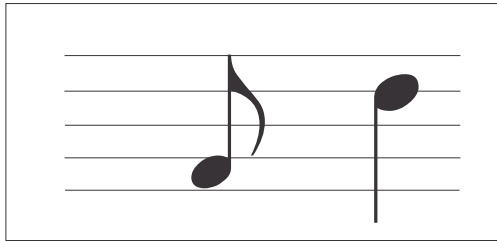
Two eighth notes

Repeat sign

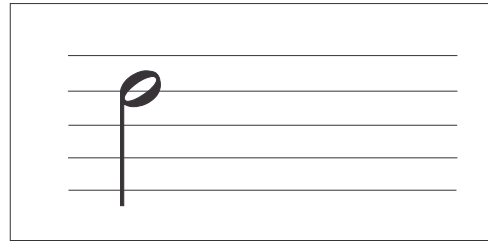


A Little Revision

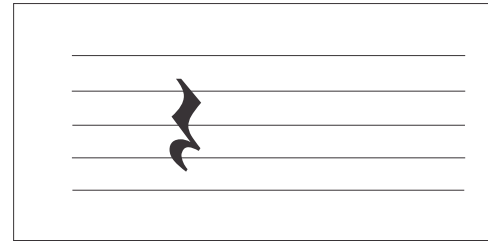
Can you do this ?



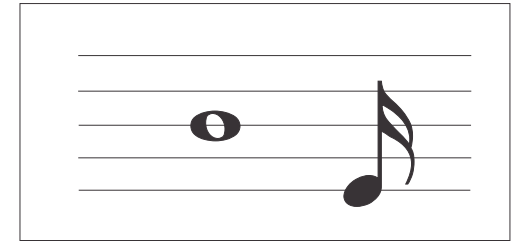
Draw a sharp next to the eighth note



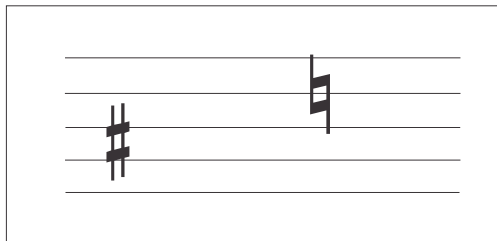
Draw the rest that belongs to this note.



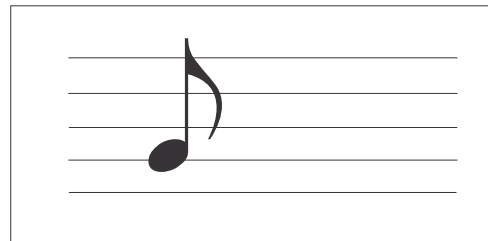
Draw the note that belongs to this rest.



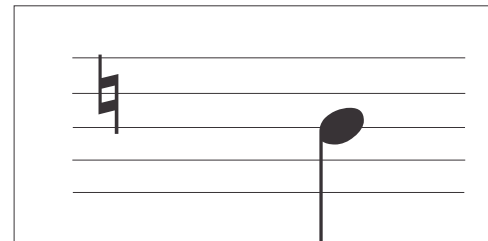
Draw a flat next to the whole note.



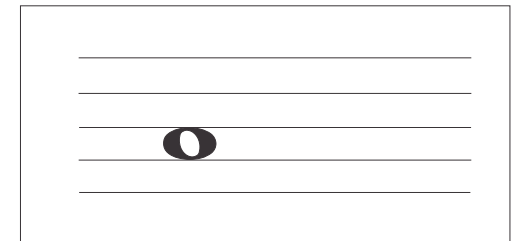
Draw a quarter note next to the sharp.



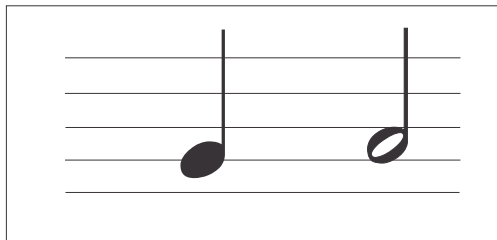
Draw the rest that belongs to this note.



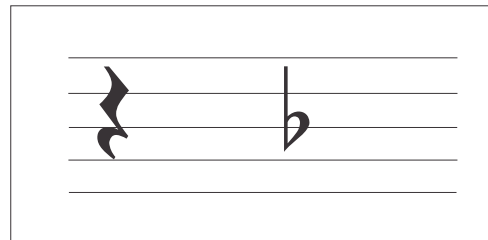
Draw a whole note next to the natural.



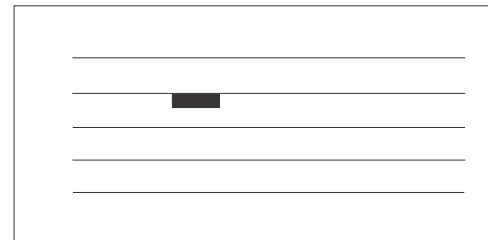
Draw the rest that belongs to this note.



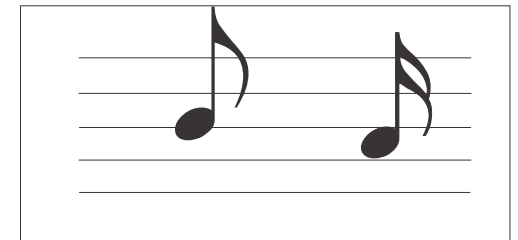
Draw a natural next to the half note.



Draw a half note next to the flat.



Draw the note that belongs to this rest.



Draw a flat next to the sixteenth note and a sharp next to the eighth note.