



# Overhead Transparencies

## Contents

1. Staves and Clefs
2. Notes and Rests
3. Note Values
4. Time Signatures
5. Music Language
6. C major and C harmonic minor scales
7. G major and G harmonic minor scales
8. D major and D harmonic minor scales
9. A major and A harmonic minor scales
10. E major and E harmonic minorscales

Copyright © Beatrice Wilder 1997  
Published in 1997 by **Music Fun**

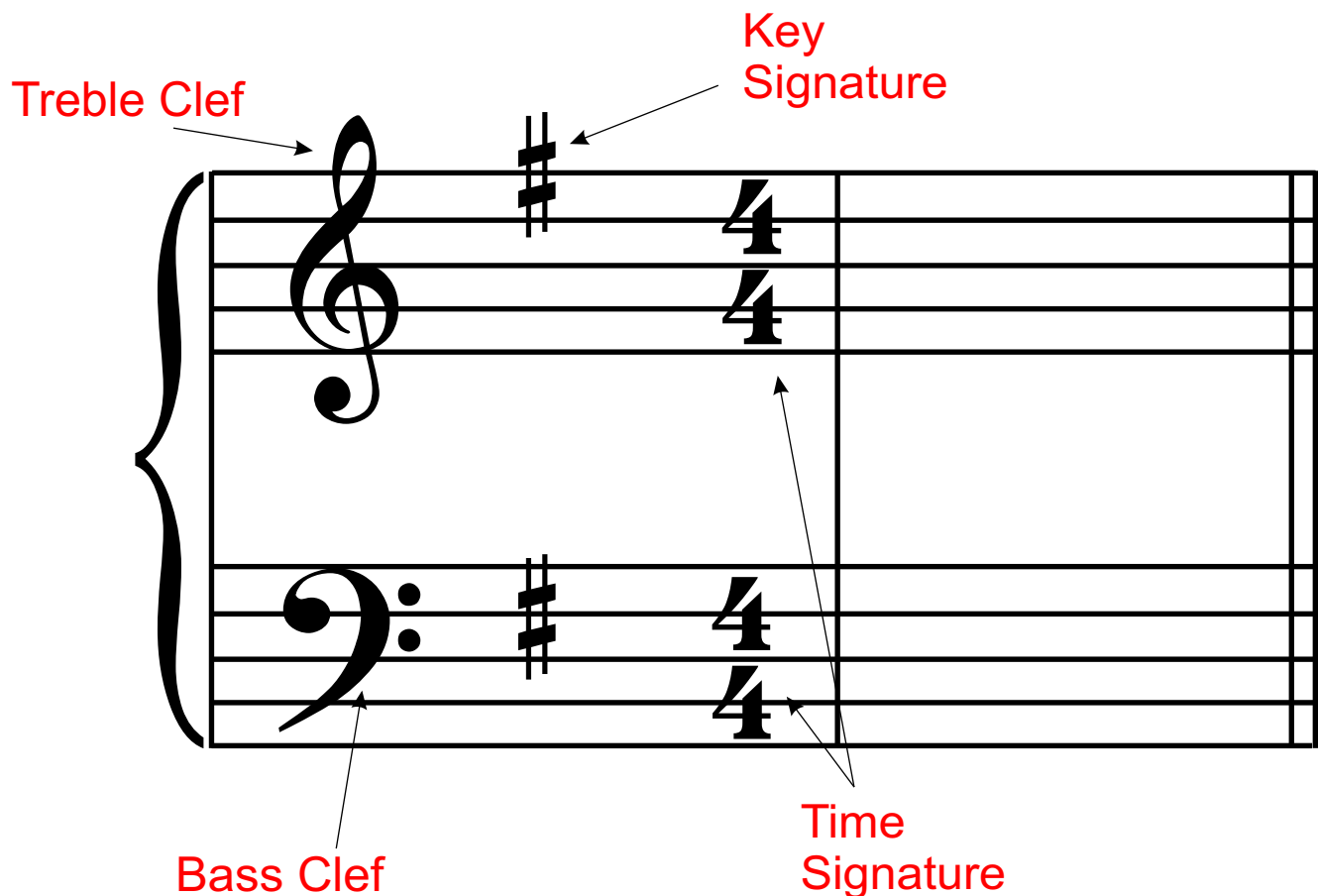
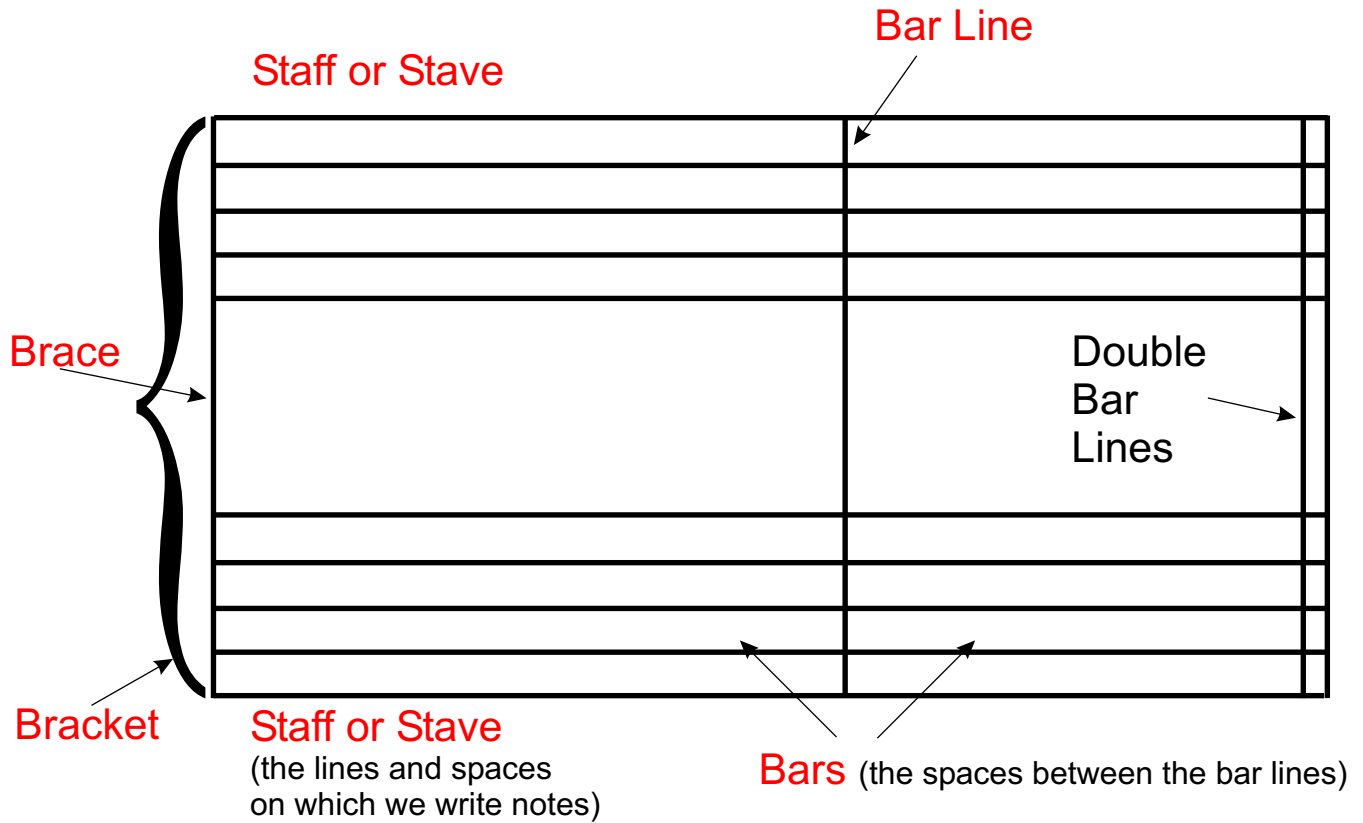
P.O. Box 342 Katoomba NSW 2780  
19 Millyard Lane Katoomba 2780  
Australia

Phone: (02) 4782 3073  
Fax: (02) 4782 6362  
Email: [info@musicfun.com.au](mailto:info@musicfun.com.au)  
Web: [www.musicfun.com.au](http://www.musicfun.com.au)



# Overhead Transparencies

## No. 1 - Staves and Clefs





# Overhead Transparencies

## No. 2 - Staves and Clefs

**Whole Note**  
(or semibreve)



Note



Rest

**Half Note**  
(or minim)



Note



Rest

**Quarter Note**  
(or crotchet)



Note



Rest

**Eighth Note**  
(or Quaver)



Note



Rest

**Sixteenth Note**  
(or semiquaver)



Note



Rest



# Overhead Transparencies

## No. 3 - Note Values

One whole note  
has the same value as  
two half notes

One half note  
has the same value as  
two quarter notes

One quarter note  
has the same value as  
two eighth notes

One eighth note  
has the same value as  
two sixteenth notes

$\text{O} = \text{♪} \text{♪} = \text{♩} \text{♩} \text{♩} \text{♩} = \text{♪♪♪♪} \text{♪♪♪♪}$



# Overhead Transparencies

## No. 4 - Time Signatures

Two quarter note beats in each bar

$\frac{2}{4}$  C4 D4 E4 F4  $\frac{2}{4} = \text{C4}$

Three quarter note beats in each bar

$\frac{3}{4}$  C4 D4 E4 F4 G4 A4  $\frac{3}{4} = \text{C4}$

Four quarter note beats in each bar

$\frac{4}{4}$  C4 D4 E4 F4 G4 A4 B4 C5  $\frac{4}{4} = \text{C4}$

Three eighth note beats in each bar

$\frac{3}{8}$  C4 D4 E4 F4 G4 A4  $\frac{3}{8} = \text{C4}$

Two dotted quarter note beats in each bar

$\frac{6}{8}$  C4 D4 E4 F4 G4 A4  $\frac{6}{8} = \text{C4}$



# Overhead Transparencies

## No. 5 - Music Language

Signs which tell you to play loudly or to get louder

*mf* moderately loud      *f* loud



*cresc.*      *crescendo*

*ff* very loud      *sf* with force

These signs mean:  
gradually becoming louder

Signs which tell you to play softly or to get softer

*mp* moderately soft      *p* soft

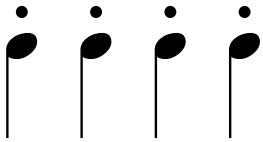


*dim.*      *diminuendo*

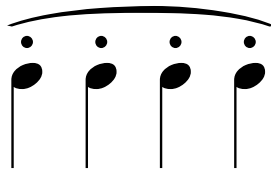
*pp* very soft      *ppp* as soft as possible

These signs mean:  
gradually becoming softer

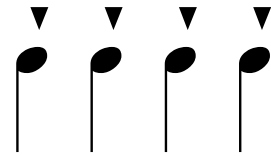
Signs which tell you to play notes in a short, detached manner



Staccato  
(short, detached)

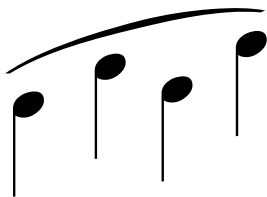


MezzoStaccato  
(moderately short, detached)

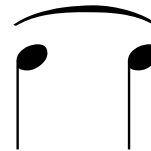


Staccatissimo  
(as short as possible)

Signs which tell you to play notes smoothly or connected



Slur or Phrase Line  
(play notes Legato or Connected)

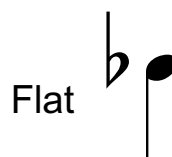


A TIE connects notes of the same pitch  
(play a single note for the combined value)

Accidentals



A sharp tells you to  
play a note  
one semitone higher



A flat tells you to  
play a note  
one semitone lower



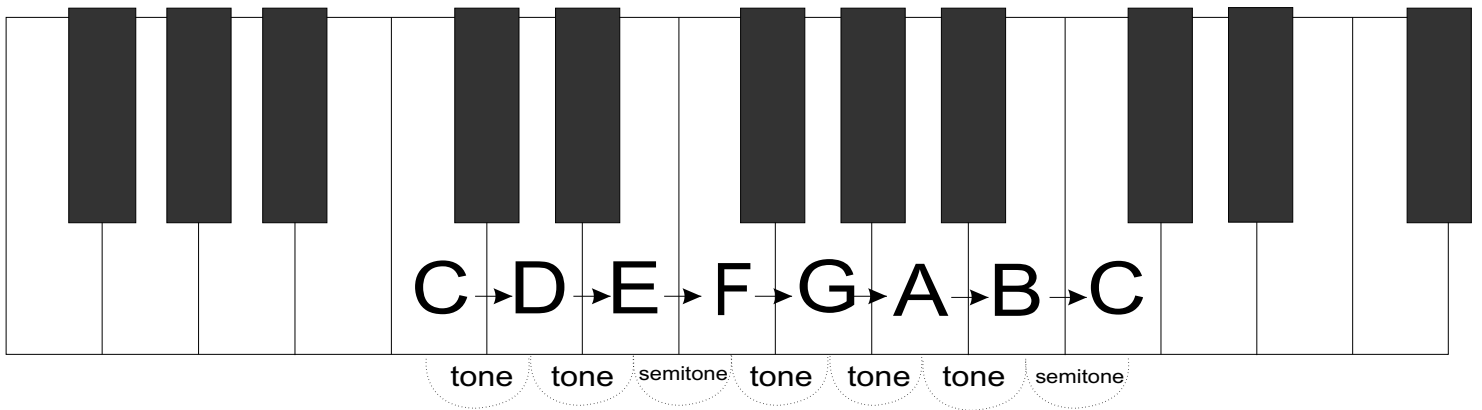
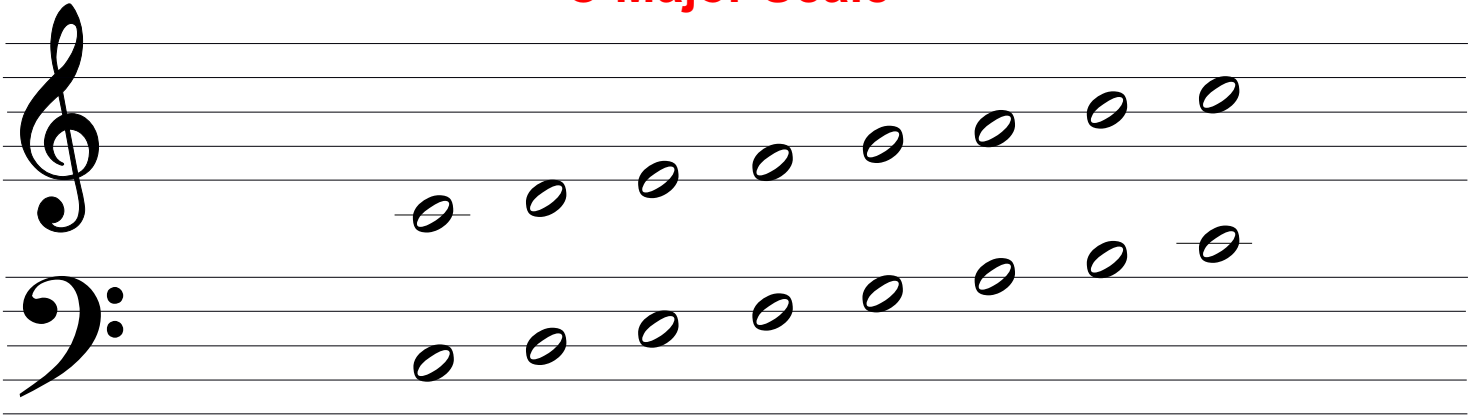
A natural cancels  
the effect of a  
sharp or flat



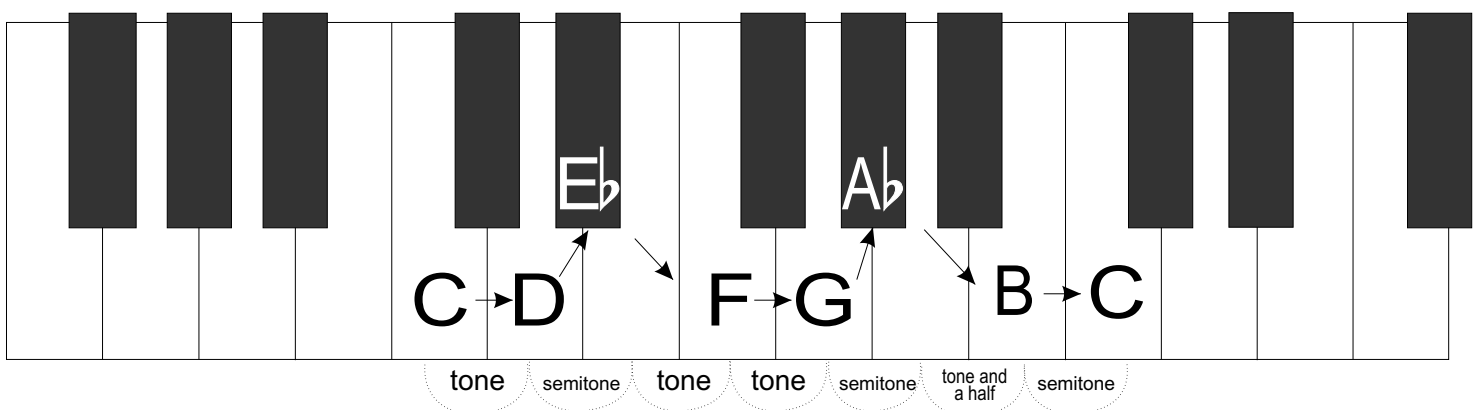
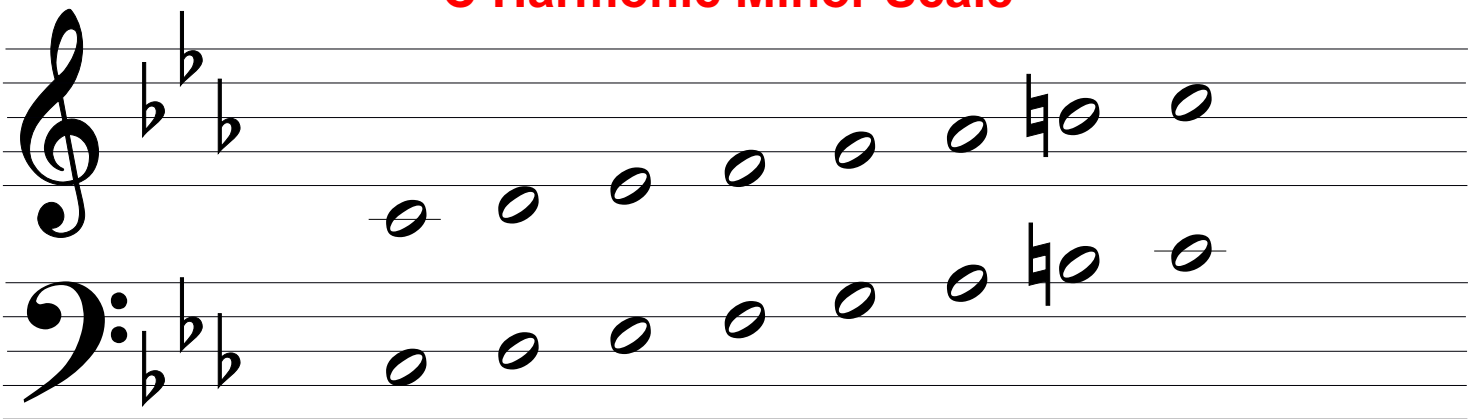
# Overhead Transparencies

## No. 6 - C Major and C Minor Scales

### C Major Scale



### C Harmonic Minor Scale







# Overhead Transparencies

## No. 7 - G Major and G Minor Scales

### G Major Scale

tone tone semitone tone tone tone semitone

### G Harmonic Minor Scale

tone semitone tone tone semitone tone and a half semitone



# Overhead Transparencies

## No. 8 - D Major and D Minor Scales

### D Major Scale

D → E → F# → G → A → B → C# → D

tone tone semitone tone tone tone semitone

### D Harmonic Minor Scale

D → E → F → G → A → Bb → C# → D

tone semitone tone tone semitone tone and a half semitone



# Overhead Transparencies

## No. 9 - A Major and A Minor Scales

### A Major Scale

tone tone semitone tone tone tone semitone

### A Harmonic Minor Scale

tone semitone tone tone semitone tone and a half semitone



# Overhead Transparencies

## No. 10 - E Major and E Minor Scales

### E Major Scale

tone tone semitone tone tone tone semitone

### E Harmonic Minor Scale

tone semitone tone tone semitone tone and a half semitone