



Overhead Transparencies

Contents

1. Staves and Clefs
2. Notes and Rests
3. Note Values
4. Time Signatures
5. Music Language
6. C major and C harmonic minor scales
7. G major and G harmonic minor scales
8. D major and D harmonic minor scales
9. A major and A harmonic minor scales
10. E major and E harmonic minorscales

Copyright © Beatrice Wilder 1997
Published in 1997 by **Music Fun**

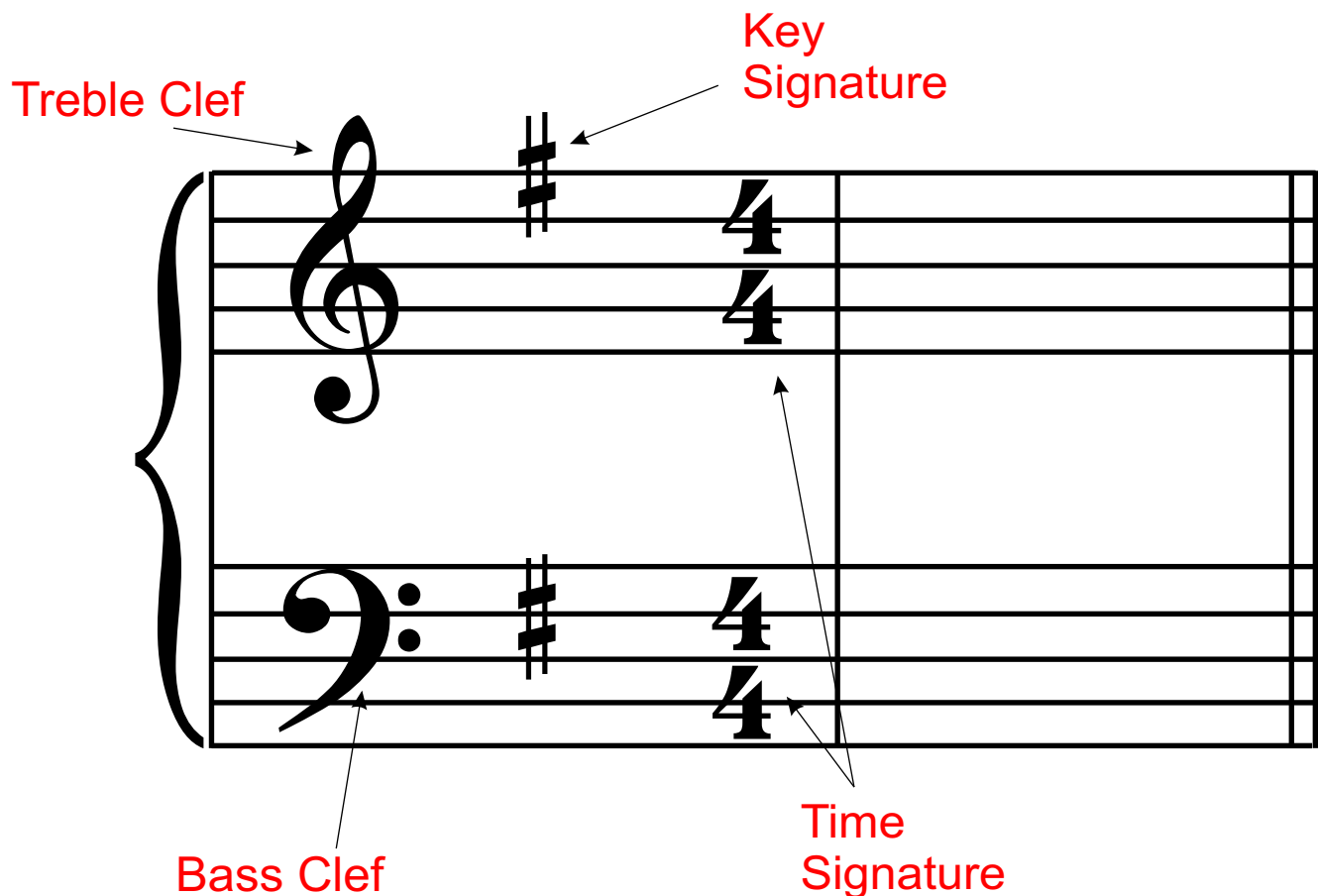
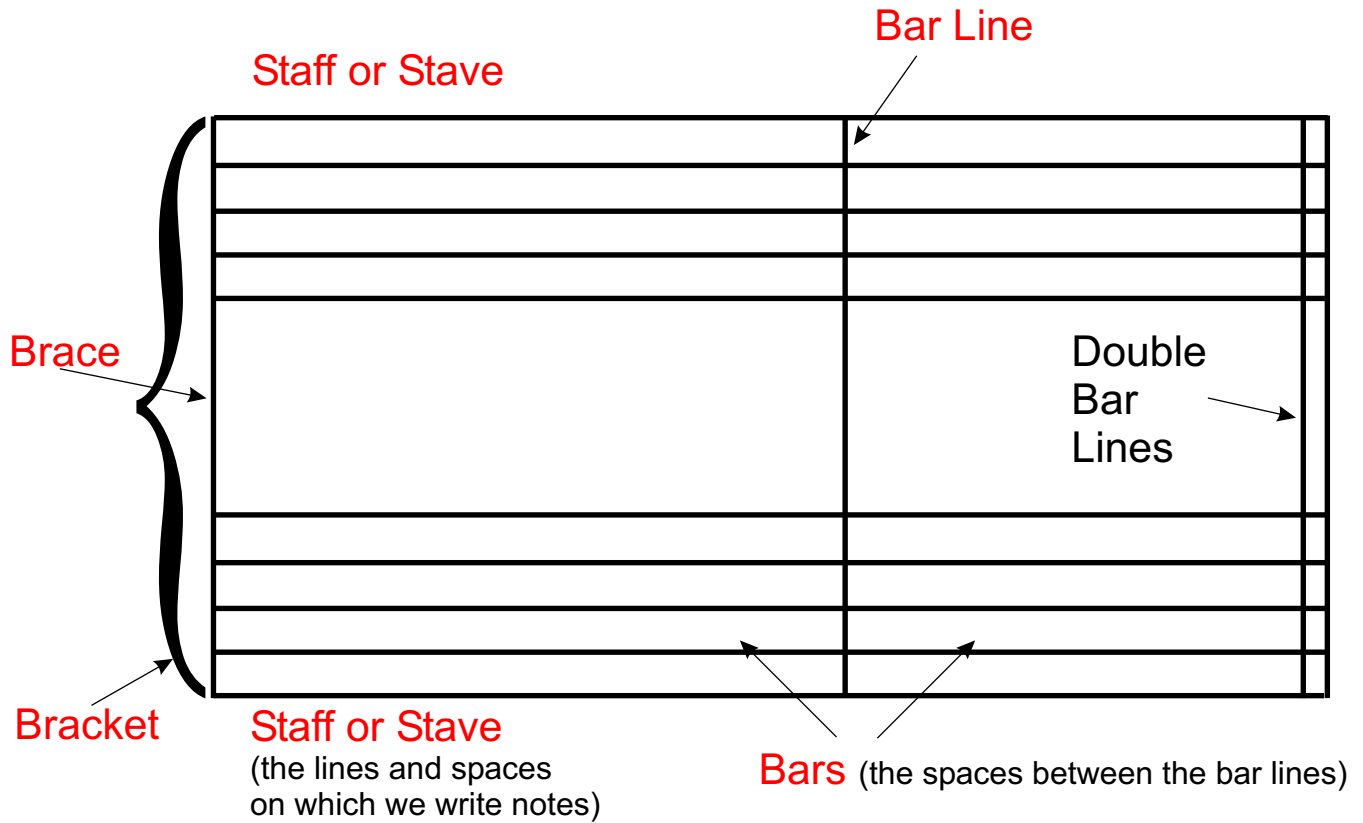
P.O. Box 342 Katoomba NSW 2780
19 Millyard Lane Katoomba 2780
Australia

Phone: (02) 4782 3073
Fax: (02) 4782 6362
Email: info@musicfun.com.au
Web: www.musicfun.com.au



Overhead Transparencies

No. 1 - Staves and Clefs





Overhead Transparencies

No. 2 - Staves and Clefs

Semibreve
(or whole note)



Note



Rest

Minim
(or half note)



Note



Rest

Crotchet
(or quarter note)



Note



Rest

Quaver
(or eighth note)



Note



Rest

Semiquaver
(or sixteenth note)



Note



Rest

Overhead Transparencies

No. 3 - Note Values

One semibreve
has the same value as
two minims

One minim
has the same value as
two crotchets

One crotchet
has the same value as
two quavers

One quaver
has the same value as
two semiquavers

$\text{Semibreve} = 2 \times \text{Minim} = 4 \times \text{Crotchet} = 8 \times \text{Quaver} = 16 \times \text{Semiquaver}$



Overhead Transparencies

No. 4 - Time Signatures

Two crotchet beats in each bar

$\frac{2}{4}$ $\frac{2}{4} = \frac{2}{2}$

Three crotchet beats in each bar

$\frac{3}{4}$ $\frac{3}{4} = \frac{3}{2}$

Four crotchet beats in each bar

$\frac{4}{4}$ $\frac{4}{4} = \frac{4}{2}$

Three quaver beats in each bar

$\frac{3}{8}$ $\frac{3}{8} = \frac{3}{4}$

Two dotted crotchet beats in each bar

$\frac{6}{8}$ $\frac{6}{8} = \frac{2}{4}$



Overhead Transparencies

No. 5 - Music Language

Signs which tell you to play loudly or to get louder

mf moderately loud *f* loud



cresc. *crescendo*

ff very loud *sf* with force

These signs mean:
gradually becoming louder

Signs which tell you to play softly or to get softer

mp moderately soft *p* soft

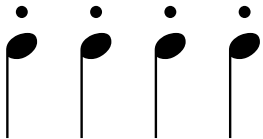


dim. *diminuendo*

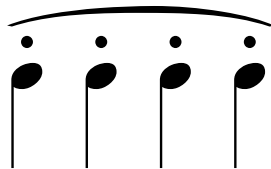
pp very soft *ppp* as soft as possible

These signs mean:
gradually becoming softer

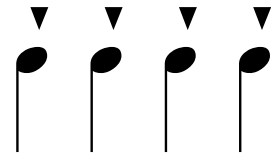
Signs which tell you to play notes in a short, detached manner



Staccato
(short, detached)

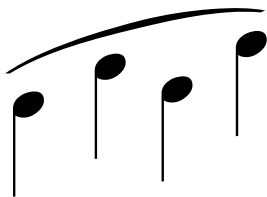


MezzoStaccato
(moderately short, detached)

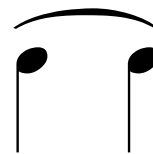


Staccatissimo
(as short as possible)

Signs which tell you to play notes smoothly or connected

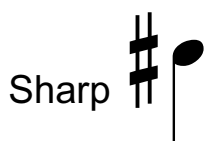


Slur or Phrase Line
(play notes Legato or Connected)

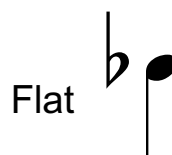


A TIE connects notes of the same pitch
(play a single note for the combined value)

Accidentals



A sharp tells you to
play a note
one semitone higher



A flat tells you to
play a note
one semitone lower



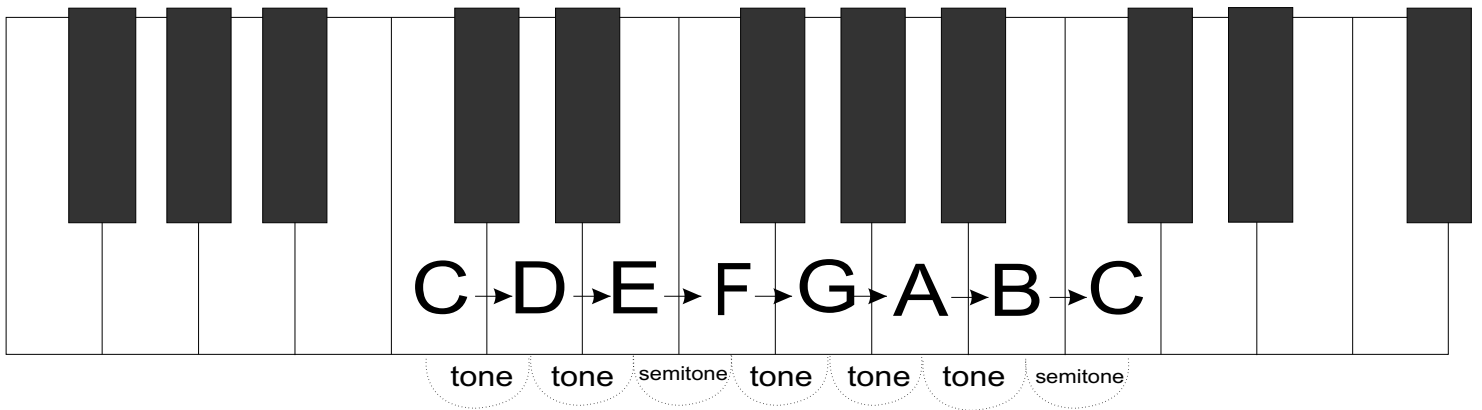
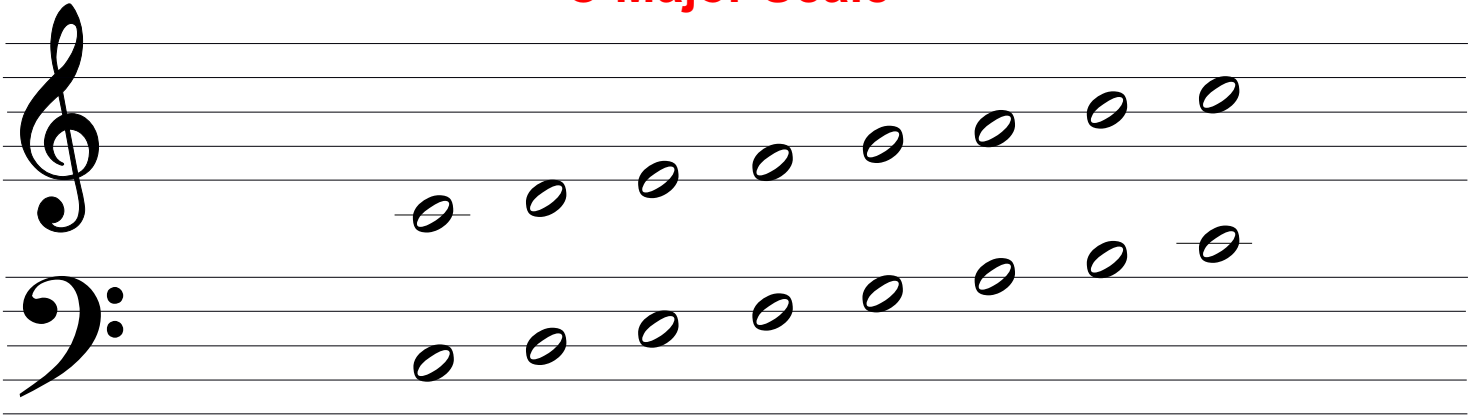
A natural cancels
the effect of a
sharp or flat



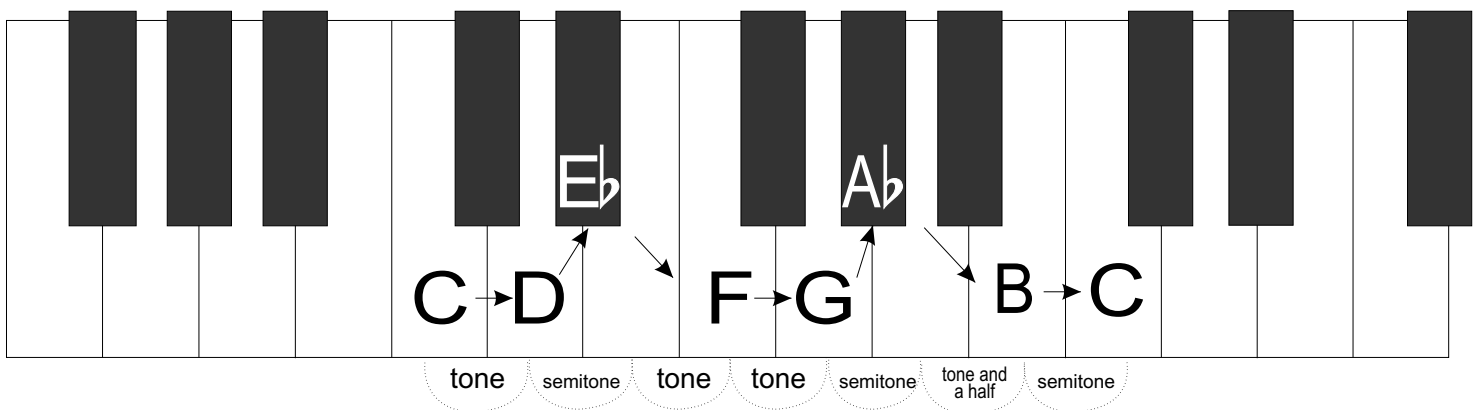
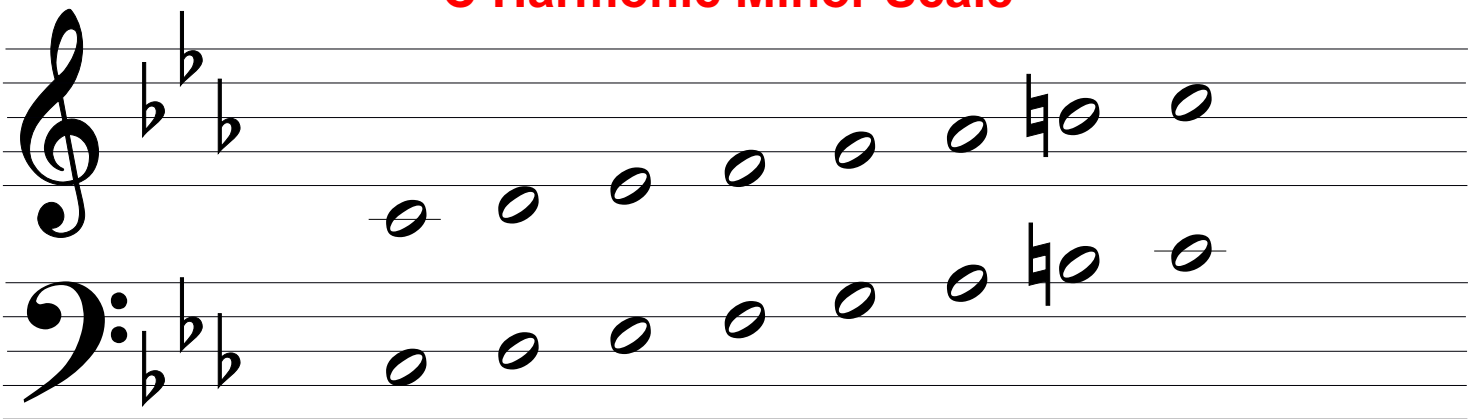
Overhead Transparencies

No. 6 - C Major and C Minor Scales

C Major Scale



C Harmonic Minor Scale





Overhead Transparencies

No. 7 - G Major and G Minor Scales

G Major Scale

tone tone semitone tone tone tone semitone

G Harmonic Minor Scale

tone semitone tone tone semitone tone and a half semitone



Overhead Transparencies

No. 8 - D Major and D Minor Scales

D Major Scale

tone tone semitone tone tone tone semitone

D Harmonic Minor Scale

tone semitone tone tone semitone tone and a half semitone



Overhead Transparencies

No. 9 - A Major and A Minor Scales

A Major Scale

tone tone semitone tone tone tone semitone

A Harmonic Minor Scale

tone semitone tone tone semitone tone and a half semitone



Overhead Transparencies

No. 10 - E Major and E Minor Scales

E Major Scale

tone tone semitone tone tone tone semitone

E Harmonic Minor Scale

tone semitone tone tone semitone tone and a half semitone