



Melody Match

Beatrice Wilder

Contents

- Sheet 1 Name the Songs - 1
- Sheet 2 Name the Songs - 2
- Sheet 3 Add the Next Bar
- Sheet 4 Scrambled Tunes
- Sheet 5 Join the pairs
- Sheet 6 List of Tunes Used

Copyright © Beatrice Wilder 2009
Published in 2009 by **Music Fun**

P.O. Box 342 Katoomba NSW 2780
19 Millyard Lane Katoomba 2780

Phone: 0438 439 984

Email: info@musicfun.net.au

Web: www.musicfun.net.au

Please feel free to contact us with any questions about the copying and use of our worksheets in your school as well as information about Australia's current copyright provisions governing educational institutions.

Nearly all Australian schools have licenses allowing them to copy and communicate material including from our worksheets. If in doubt, please ask us.



Melody Match

Sheet 1 - Name the Songs - 1

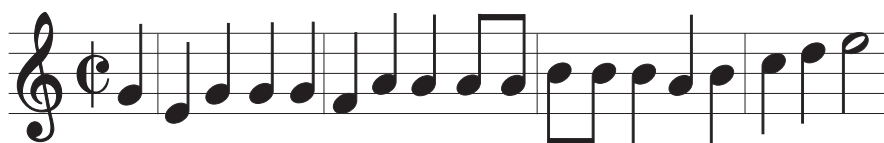
Name

Clapping the rhythms of the first four bars of these melodies will help you to name the tunes.
You can also hum the tunes to yourself. Write their names on the lines provided.
Their titles are jumbled up on the right.



Yankee Doodle

1.



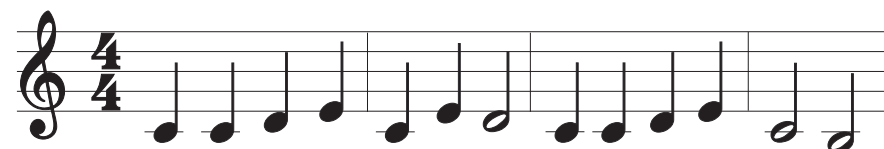
Are You Sleeping?

2.



Green Sleeves

3.



Little Brown Jug

4.



Eency Weency Spider

5.



This Old Man

6.



Row, Row, Row Your Boat

7.



Sheet 2 - Name the Songs - 2

Clapping the rhythms of the first four bars of these melodies will help you to name the tunes.

You can also hum the tunes to yourself. Write their names on the lines provided.

Their titles are jumbled up on the right.



Jack And Jill

Billy Boy

Old MacDonald

Twinkle Twinkle

Pop Goes The Weasel

Ode To Joy

7.



Melody Match

Sheet 3 - Add the Next Bar

Name

The first three bars to each of these melodies are provided.
The next bar is on its own, on the right side of the page. They are mixed up.
Choose the correct bar and write it in the space provided. Name the tunes.

Pop Goes The Weasel

All Through The Night

Polly Put The Kettle On

Yankee Doodle

Good-night, Ladies

This Old Man

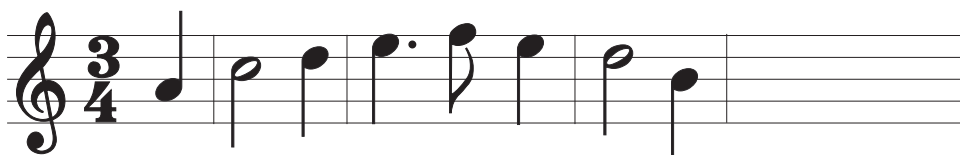
Green Sleeves



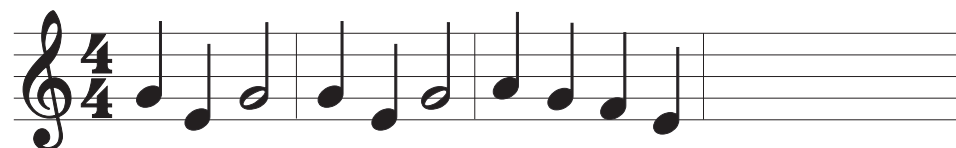
1.



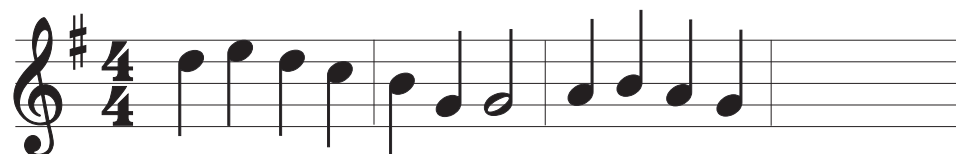
2.



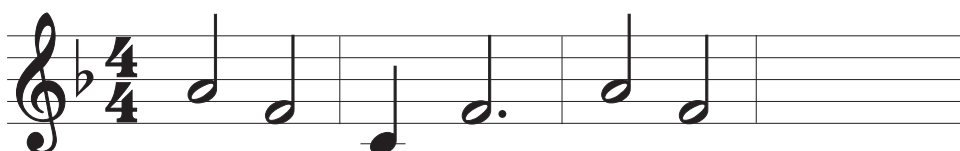
3.



4.



5.



6.



7.



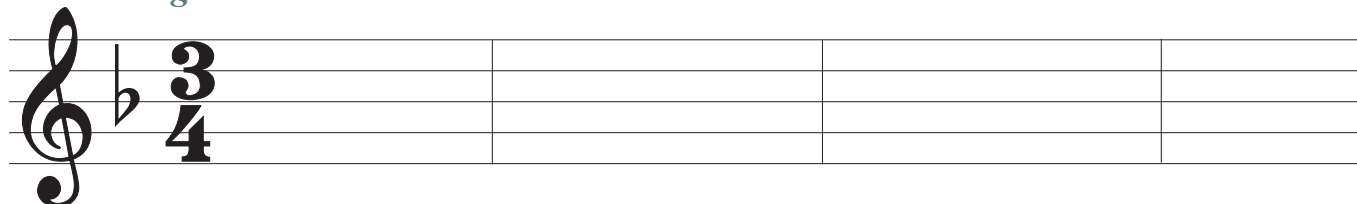
Melody Match

Sheet 4 - Scrambled Tunes 1

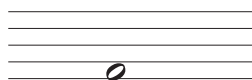
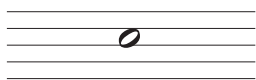
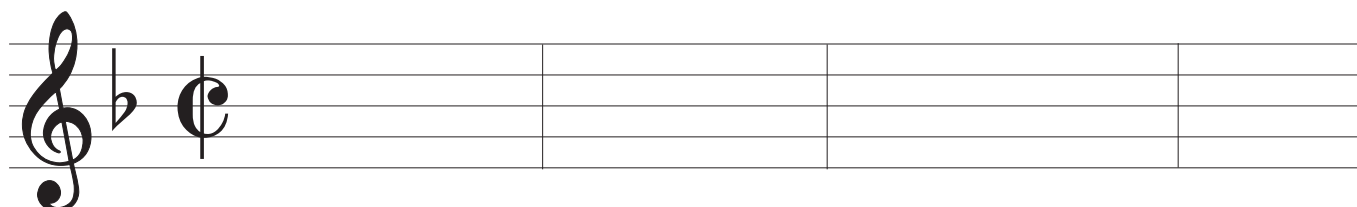
Name

The opening four bars of each of the following tunes need to be arranged in the correct order.

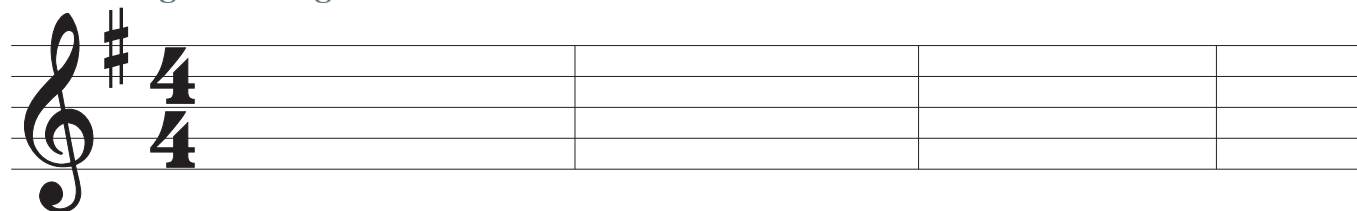
Scarborough Fair



Ding, Dong, Bell, Pussy's in the Well



All Through The Night



Good-night, Ladies





Melody Match

Sheet 5 - Join the Pairs

Name

Draw lines to join the first two bars to the following two bars of these songs. Write the names of the songs under the opening bars.

Eency Weency Spider

Are You Sleeping?

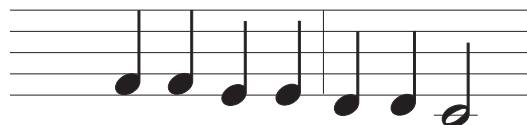
Polly Put The Kettle On

Old MacDonald

This Old Man

Lightly Row

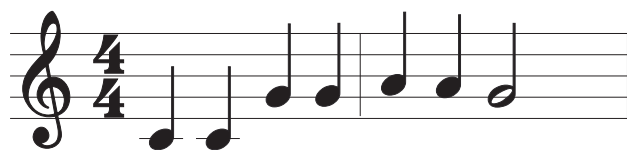
Twinkle Twinkle



1.



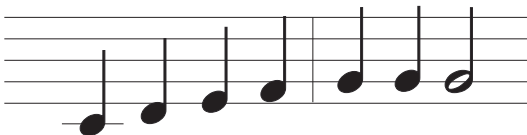
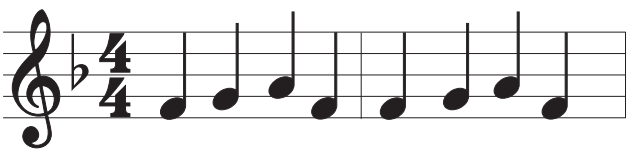
2.



3.



4.



5.



6.



7.



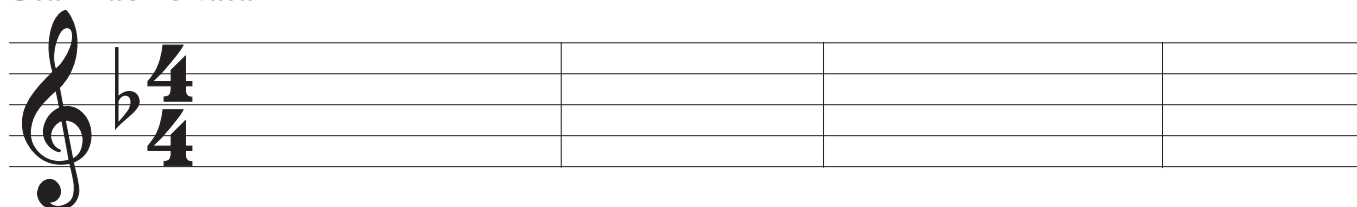
Melody Match

Sheet 6 - Scrambled Tunes 2

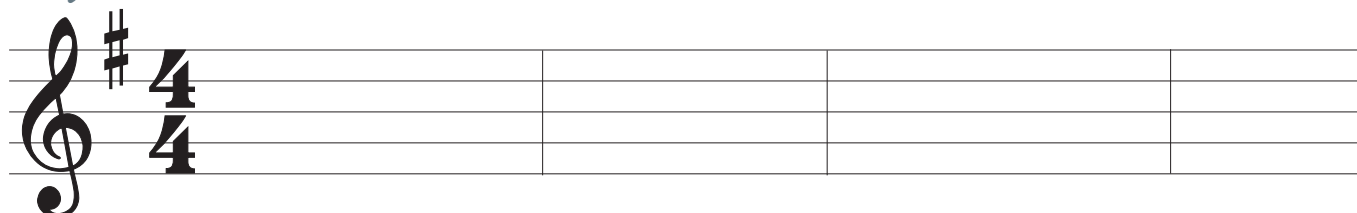
Name

The opening four bars of each of the following tunes need to be arranged in the correct order.

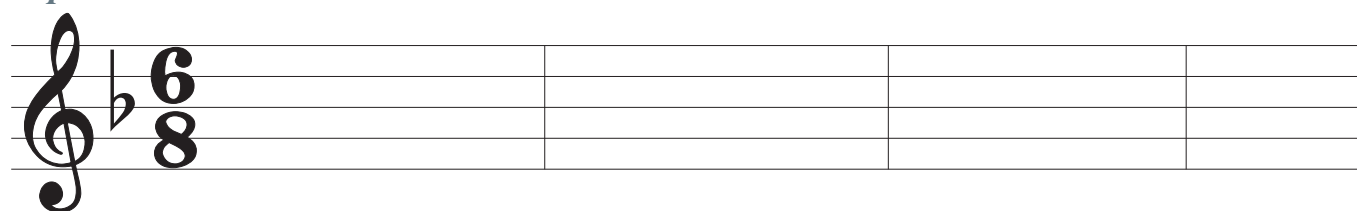
Old MacDonald



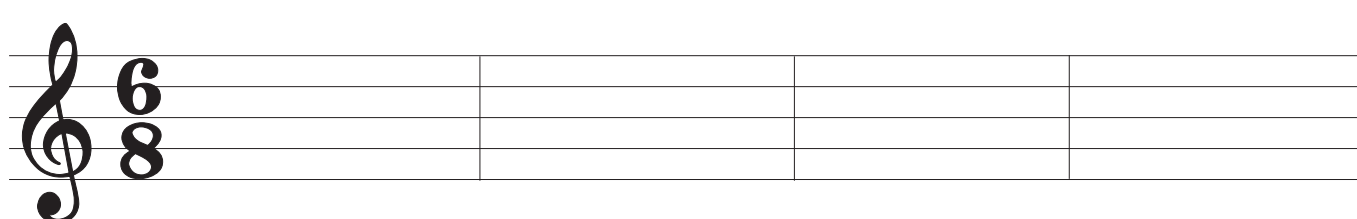
Polly Put The Kettle On



Pop Goes The Weasel



Jack And Jill





Melody Match

Sheet 6 - List of tunes used

All Through The Night



Londonderry Air



Are You Sleeping?



Ode To Joy



Billy Boy



Old MacDonald



Ding, Dong, Bell, Pussy's in the Well



Polly Put The Kettle On



Eency Weency Spider



Pop Goes The Weasel



Good-night, Ladies



Row, Row, Row Your Boat



Green Sleeves



Scarborough Fair



Jack And Jill



This Old Man



Lightly Row



Twinkle Twinkle



Little Brown Jug



Yankee Doodle

